

*Automobile Lamp Repairs.
STIMSON HENRY I.
268 Wabash av. tel. Harrison-3123

*Automobile Lamps.
EXCELSIOR SUPPLY CO.
Hannibal st. bridge

*Automobile Lamps.
(Manufacturers.)
RUSHMORE DYNAMO
WORKS, 1828-1830 Michigan av. tel. Cal-
umet-2679

*Automobile Lamps.
(Repairing.)
ILLINOIS CARRIAGE
LAMP CO. (INC.) (TIE) 4th & 224 W
Illinois

*Automobile Lamps and Trimmings.
(Manufacturers.)
ADAMS & WESTLAKE CO.
(TIE), office 219 W. Ontario

*Automobile Livery.
ADLAKE AUTO LIVERY,
5309 Cottage Grove av. tel. Calumet-4377

*Automobile Livery.
AMERICAN MOTOR LIVERY
615 4748-48 Cottage Grove av. tel. Oakland-
252

*Automobile Livery.
WEST MOTOR LIVERY CO.
2129 Indiana av. tel. Calumet-405

*Automobile Livery.
(Gasoline and Electric Trolleys.)
FAY OWEN H. LIVERY CO.
51 Plymouth st. tel. Harrison-1814, 1815
and Automatic-9557

*Automobile Livery.
(Renting.)
CALUMET AUTOMOBILE
LIVERY, 2140 Calumet av. tel. Calumet-
304

*Automobile Livery.
(Chauffeur.)
AUTO TAXICAB COMPANY,
2441-2448 Michigan av. tel. Calumet-2782
and 1810-1812 Wells, tel. Lincoln-4008

*Automobile Livery and Garage.
CENTRAL AUTOMOBILE CO.
1448 Wabash av. tel. Calumet-1782

*Automobile Materials.
PETERSON K. FRANKLIN,
206 Lake, tel. Main-1391

*Automobile, Motor-cycle and Bicycle
Tires.
EXCELSIOR SUPPLY CO.
Hannibal st. bridge

*Automobile Oils, Polishes and Cleaners.
CLEANOLA CO. AUTO
CLEANER, 514 W. Vanburen

*Automobile Painting.
(Trimming, etc.)
AUTOMOBILE & CAR-
riage Works, James Schaubert, propr.
408-410 LaSalle, tel. Monroe-6000

*Automobile Painting.
(Trimming and Repairing.)
KOONS F. R.
820 N. 39th, tel. Aitline-1687

*Automobile Parts.
(Carburetors, Control Seta, Posters, Oil Basins
and Glass Tanks.)
ACORN BLASS MFG. CO.
Green, Fulton and Peoria sts.

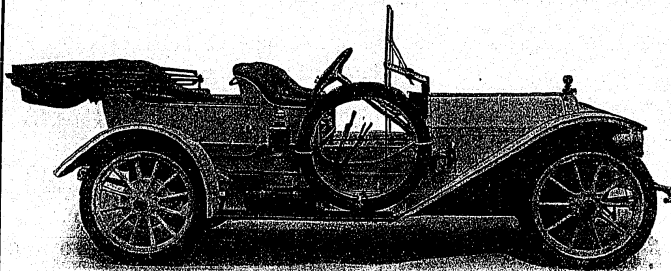
*Automobile Radiator Repairing.
J. RUSSO & CO.
We rebuild and repair all kinds of Auto
Radiators, Hoods, Fenders, Lamps, Etc.
1331 WABASH AV. Tel. Calumet 4583

COEY'S AUTOMOBILE SERVICE

Chicago's First Auto Livery

AND AMERICA'S BEST

Only Ones Using New 1910 Machines



THE McFARLAN SIX

A Six-Cylinder Machine. You can rent it for only \$4.00 an hour

[CHEAPER] THAN TAXICABS

And one hundred per cent better

Every Driver Bonded

Service Guaranteed Satisfactory or Money Refunded

If you like it, you can have one fully equipped for only \$2,000

Exclusive Agents for Illinois, Wisconsin and Michigan

C. A. COEY AUTO SERVICE CO.

1710-12-14-16-18 Indiana Avenue

Phones, Calumet 1041, 1042, 1043 C. A. COEY, Pres. and Gen. Mgr.

WALDEN SHAW

TAXICABS AND TOURING CARS

TELEPHONE

7531

SEVEN FIVE THREE ONE
HARRISON
CONNECTS WITH ALL BRANCHES

Stations in all parts of city

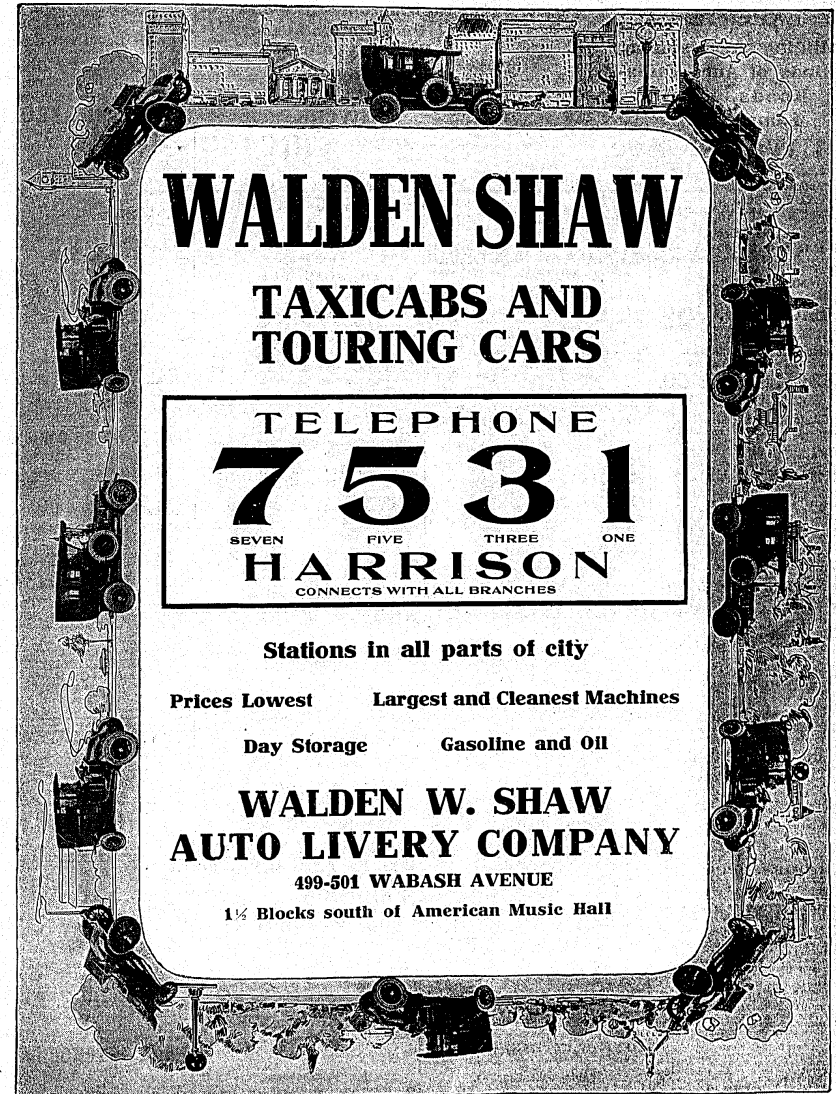
Prices Lowest Largest and Cleanest Machines

Day Storage Gasoline and Oil

WALDEN W. SHAW AUTO LIVERY COMPANY

499-501 WABASH AVENUE

1/2 Blocks south of American Music Hall



CHICAGO AUTO LIVERY

CALUMET 4848

Touring Cars and Limousines at Taxicab Rates.

1919 Prairie Ave.

BAKERIES

1468

BAKERIES

Bakeries—continued.

Kohlsaat H. & Co. 1701 Wabash av.
Kreuter Bakery 504 S. Dearborn av.
Ludwig's Baking Co. 414 Wabash av.

MOODY & WATERS
1100 Congress st. Monroe-800
National Biscuit Co. 110 N. Morgan.

NATIONAL BISCUIT COMPANY
110 NORTH MORGAN ST.
TELEPHONE MONROE 5201

PIPER H. CO. (THE)

1010 to 1020 Wells
Bakery and Confectionery 1118 S. State
Reed Hotel, E. 543 W. 67th

SAWYER BISCUIT

C. O. W. Harrison and Milling, etc. Monroe-30
Schlosser M. Baking Co. 3094 Lincoln av.

SCHULZE BAKING

C. O. general office 1117, 108 LaSalle; bakery
104 S. LaSalle; 1012 Madison st. and 1847
North.

VIENNA MODEL BAKERY,

(7118) 1040-1045 Vermont Park pl.
Vollz, Adolph Co. 1012 Milwaukee st. and 1847
North.

WARD-CORBY CO.

Leighton and Roosevelt sta. tel. West-288
Westman P. & Co. 215 N. Dearborn
Wolfe, Charles J. 1010 S. Jefferson

Bakeries.

Abraham Vint & Co. 1538 W. 14th
Abraham Vint & Co. 1538 W. 14th
Abraham Vint & Co. 1538 W. 14th

Abraham Vint & Co. 1538 W. 14th
Abraham Vint & Co. 1538 W. 14th
Abraham Vint & Co. 1538 W. 14th

Abraham Vint & Co. 1538 W. 14th
Abraham Vint & Co. 1538 W. 14th
Abraham Vint & Co. 1538 W. 14th

Bialas Bakery 1741 W. 51st
Bierka Bakery 1537 W. 18th
Bierka Bakery 1537 W. 18th

Bierka Bakery 1537 W. 18th
Bierka Bakery 1537 W. 18th
Bierka Bakery 1537 W. 18th

Bierka Bakery 1537 W. 18th
Bierka Bakery 1537 W. 18th
Bierka Bakery 1537 W. 18th

Bierka Bakery 1537 W. 18th
Bierka Bakery 1537 W. 18th
Bierka Bakery 1537 W. 18th

Bieloson Arthur 2006 Belmont av.
Bieloson Arthur 2006 Belmont av.
Bieloson Arthur 2006 Belmont av.

Bieloson Arthur 2006 Belmont av.
Bieloson Arthur 2006 Belmont av.
Bieloson Arthur 2006 Belmont av.

Bieloson Arthur 2006 Belmont av.
Bieloson Arthur 2006 Belmont av.
Bieloson Arthur 2006 Belmont av.

Bieloson Arthur 2006 Belmont av.
Bieloson Arthur 2006 Belmont av.
Bieloson Arthur 2006 Belmont av.

Bieloson Arthur 2006 Belmont av.
Bieloson Arthur 2006 Belmont av.
Bieloson Arthur 2006 Belmont av.

Bieloson Arthur 2006 Belmont av.
Bieloson Arthur 2006 Belmont av.
Bieloson Arthur 2006 Belmont av.

Bieloson Arthur 2006 Belmont av.
Bieloson Arthur 2006 Belmont av.
Bieloson Arthur 2006 Belmont av.

Bieloson Arthur 2006 Belmont av.
Bieloson Arthur 2006 Belmont av.
Bieloson Arthur 2006 Belmont av.

Bieloson Arthur 2006 Belmont av.
Bieloson Arthur 2006 Belmont av.
Bieloson Arthur 2006 Belmont av.

Bieloson Arthur 2006 Belmont av.
Bieloson Arthur 2006 Belmont av.
Bieloson Arthur 2006 Belmont av.

Bieloson Arthur 2006 Belmont av.
Bieloson Arthur 2006 Belmont av.
Bieloson Arthur 2006 Belmont av.

Bieloson Arthur 2006 Belmont av.
Bieloson Arthur 2006 Belmont av.
Bieloson Arthur 2006 Belmont av.

Bieloson Arthur 2006 Belmont av.
Bieloson Arthur 2006 Belmont av.
Bieloson Arthur 2006 Belmont av.

Bieloson Arthur 2006 Belmont av.
Bieloson Arthur 2006 Belmont av.
Bieloson Arthur 2006 Belmont av.

Bieloson Arthur 2006 Belmont av.
Bieloson Arthur 2006 Belmont av.
Bieloson Arthur 2006 Belmont av.

Bieloson Arthur 2006 Belmont av.
Bieloson Arthur 2006 Belmont av.
Bieloson Arthur 2006 Belmont av.

Bieloson Arthur 2006 Belmont av.
Bieloson Arthur 2006 Belmont av.
Bieloson Arthur 2006 Belmont av.

Bieloson Arthur 2006 Belmont av.
Bieloson Arthur 2006 Belmont av.
Bieloson Arthur 2006 Belmont av.

Bieloson Arthur 2006 Belmont av.
Bieloson Arthur 2006 Belmont av.
Bieloson Arthur 2006 Belmont av.

Bieloson Arthur 2006 Belmont av.
Bieloson Arthur 2006 Belmont av.
Bieloson Arthur 2006 Belmont av.

Bieloson Arthur 2006 Belmont av.
Bieloson Arthur 2006 Belmont av.
Bieloson Arthur 2006 Belmont av.

Bieloson Arthur 2006 Belmont av.
Bieloson Arthur 2006 Belmont av.
Bieloson Arthur 2006 Belmont av.

Bieloson Arthur 2006 Belmont av.
Bieloson Arthur 2006 Belmont av.
Bieloson Arthur 2006 Belmont av.

Bieloson Arthur 2006 Belmont av.
Bieloson Arthur 2006 Belmont av.
Bieloson Arthur 2006 Belmont av.

BAKERS

1469

BAKERIES

Brasse Water 424 W. 31st
Brasse Water 424 W. 31st
Brasse Water 424 W. 31st

Brasse Water 424 W. 31st
Brasse Water 424 W. 31st
Brasse Water 424 W. 31st

Brasse Water 424 W. 31st
Brasse Water 424 W. 31st
Brasse Water 424 W. 31st

BAKERS

Brasse Water 424 W. 31st
Brasse Water 424 W. 31st
Brasse Water 424 W. 31st

Brasse Water 424 W. 31st
Brasse Water 424 W. 31st
Brasse Water 424 W. 31st

Brasse Water 424 W. 31st
Brasse Water 424 W. 31st
Brasse Water 424 W. 31st

Brasse Water 424 W. 31st
Brasse Water 424 W. 31st
Brasse Water 424 W. 31st

Brasse Water 424 W. 31st
Brasse Water 424 W. 31st
Brasse Water 424 W. 31st

Brasse Water 424 W. 31st
Brasse Water 424 W. 31st
Brasse Water 424 W. 31st

Brasse Water 424 W. 31st
Brasse Water 424 W. 31st
Brasse Water 424 W. 31st

Brasse Water 424 W. 31st
Brasse Water 424 W. 31st
Brasse Water 424 W. 31st

Brasse Water 424 W. 31st
Brasse Water 424 W. 31st
Brasse Water 424 W. 31st

Brasse Water 424 W. 31st
Brasse Water 424 W. 31st
Brasse Water 424 W. 31st

Brasse Water 424 W. 31st
Brasse Water 424 W. 31st
Brasse Water 424 W. 31st

Brasse Water 424 W. 31st
Brasse Water 424 W. 31st
Brasse Water 424 W. 31st

Brasse Water 424 W. 31st
Brasse Water 424 W. 31st
Brasse Water 424 W. 31st

THE FUJI MFG. CO. No. 4630 Cottage Grove Avenue.

GARREN CHARLES BAKING CO. 287 to 248 E. Ontario

GARREN CHARLES BAKING CO. 287 to 248 E. Ontario

GARREN CHARLES BAKING CO. 287 to 248 E. Ontario

GARREN CHARLES BAKING CO. 287 to 248 E. Ontario

GARREN CHARLES BAKING CO. 287 to 248 E. Ontario

GARREN CHARLES BAKING CO. 287 to 248 E. Ontario

GARREN CHARLES BAKING CO. 287 to 248 E. Ontario

GARREN CHARLES BAKING CO. 287 to 248 E. Ontario

GARREN CHARLES BAKING CO. 287 to 248 E. Ontario

GARREN CHARLES BAKING CO. 287 to 248 E. Ontario

GARREN CHARLES BAKING CO. 287 to 248 E. Ontario

GARREN CHARLES BAKING CO. 287 to 248 E. Ontario

GARREN CHARLES BAKING CO. 287 to 248 E. Ontario

GARREN CHARLES BAKING CO. 287 to 248 E. Ontario

GARREN CHARLES BAKING CO. 287 to 248 E. Ontario

GARREN CHARLES BAKING CO. 287 to 248 E. Ontario

KORNSTADT C. A. 1914 and Ontario Park av.

KORNSTADT C. A. 1914 and Ontario Park av.

KORNSTADT C. A. 1914 and Ontario Park av.

KORNSTADT C. A. 1914 and Ontario Park av.

KORNSTADT C. A. 1914 and Ontario Park av.

KORNSTADT C. A. 1914 and Ontario Park av.

KORNSTADT C. A. 1914 and Ontario Park av.

KORNSTADT C. A. 1914 and Ontario Park av.

KORNSTADT C. A. 1914 and Ontario Park av.

KORNSTADT C. A. 1914 and Ontario Park av.

KORNSTADT C. A. 1914 and Ontario Park av.

KORNSTADT C. A. 1914 and Ontario Park av.

KORNSTADT C. A. 1914 and Ontario Park av.

KORNSTADT C. A. 1914 and Ontario Park av.

KORNSTADT C. A. 1914 and Ontario Park av.

KORNSTADT C. A. 1914 and Ontario Park av.

KORNSTADT C. A. 1914 and Ontario Park av.

WESTERN BAKERS' MACHINERY CO. 505 Fulton

WESTERN BAKERS' MACHINERY CO. 505 Fulton

WESTERN BAKERS' MACHINERY CO. 505 Fulton

WESTERN BAKERS' MACHINERY CO. 505 Fulton

WESTERN BAKERS' MACHINERY CO. 505 Fulton

WESTERN BAKERS' MACHINERY CO. 505 Fulton

WESTERN BAKERS' MACHINERY CO. 505 Fulton

WESTERN BAKERS' MACHINERY CO. 505 Fulton

WESTERN BAKERS' MACHINERY CO. 505 Fulton

WESTERN BAKERS' MACHINERY CO. 505 Fulton

WESTERN BAKERS' MACHINERY CO. 505 Fulton

WESTERN BAKERS' MACHINERY CO. 505 Fulton

WESTERN BAKERS' MACHINERY CO. 505 Fulton

WESTERN BAKERS' MACHINERY CO. 505 Fulton

WESTERN BAKERS' MACHINERY CO. 505 Fulton

WESTERN BAKERS' MACHINERY CO. 505 Fulton

WESTERN BAKERS' MACHINERY CO. 505 Fulton

WESTERN BAKERS' MACHINERY CO. 505 Fulton

WESTERN BAKERS' MACHINERY CO. 505 Fulton

WESTERN BAKERS' MACHINERY CO. 505 Fulton

WESTERN BAKERS' MACHINERY CO. 505 Fulton

WESTERN BAKERS' MACHINERY CO. 505 Fulton

WESTERN BAKERS' MACHINERY CO. 505 Fulton

WESTERN BAKERS' MACHINERY CO. 505 Fulton

WESTERN BAKERS' MACHINERY CO. 505 Fulton

WESTERN BAKERS' MACHINERY CO. 505 Fulton

WESTERN BAKERS' MACHINERY CO. 505 Fulton

WESTERN BAKERS' MACHINERY CO. 505 Fulton

Continental & Commercial National Bank

Capital \$20,000,000 of CHICAGO Surplus and Profits \$9,500,000

Officers:

GEORGE M. REYNOLDS, President
EDWARD S. LACEY, Chairman of Advisory Committee.
RALPH VAN VECHTEN, Vice-President
ALEX. ROBERTSON, Vice-President
HERMAN WALDECK, Vice-President
JOHN C. CRAFT, Vice-President
JAMES R. CHAPMAN, Vice-President
WM. T. BRUCKNER, Vice-President
WM. G. SCHROEDER, Secretary

NATHANIEL R. LOSCH, Cashier
FRANK H. ELMORE, Ass't Cashier
HARVEY C. VERNON, Ass't Cashier
GEO. B. SMITH, Ass't Cashier

WILBER HATTERY, Ass't Cashier
H. ERSKINE SMITH, Ass't Cashier
JOHN R. WASHBURN, Ass't Cashier
RALPH C. WILSON, Ass't Cashier
WILSON W. LAMPERT, Ass't Cashier
DAN NORMAN, Ass't Cashier
FRANK L. SHEPARD, Auditor
H. LAWTON, Manager Foreign Dept



Northeast Corner Clark and Adams Streets

Accounts of Banks, Bankers, Manufacturers, Merchants and Individuals Invited

Continental and Commercial Trust and Savings Bank

Capital \$3,000,000 Corner Monroe and Clark Streets Surplus \$500,000
Trust, Savings and Bond Departments

Officers:

E. A. POTTER, Chairman of the Board
W. IRVING OSBORNE, President JOHN JAY ABBOTT, Vice-President
CHARLES C. WILLSON, Cashier
FRANK H. JONES, Secretary WM. P. KOPF, Ass't Secretary

The Capital Stock of this Bank is Owned by the Stockholders of the Continental and Commercial National Bank of Chicago

OFFICERS

ERNEST A. HAMILL, PRESIDENT
CHARLES L. HUTCHINSON, VICE-PRESIDENT
CHAUNCEY J. BLAIR, VICE-PRESIDENT
D. A. MOULTON, VICE-PRESIDENT
B. C. SAMMONS, VICE-PRESIDENT
JOHN C. NEELY, SECRETARY
FRANK W. SMITH, CASHIER
J. EDWARD MAASS, ASS'T CASHIER
JAMES G. WAKEFIELD, ASS'T CASHIER

Capital	-	-	\$3,000,000.00
Surplus	-	-	4,000,000.00
Undivided Profits			1,000,000.00

The

CORN EXCHANGE

National Bank

CORN EXCHANGE BANK BUILDING
N. W. COR. LA SALLE and ADAMS STREETS, CHICAGO

DIRECTORS

CHARLES H. WACKER	MARTIN A. RYERSON	CHAUNCEY J. BLAIR
EDWARD B. BUTLER	CHARLES H. HULBURD	CLARENCE BUCKINGHAM
BENJAMIN CARPENTER	ISAAC G. LOMBARD	WATSON F. BLAIR
EDWIN G. FOREMAN	CHARLES L. HUTCHINSON	EDWARD A. SHEDD
FREDERICK W. CROSBY	ERNEST A. HAMILL	

UNITED STATES



DEPOSITORY

The National City Bank of Chicago

Statement of Condition at close of Business, March 29, 1910

Capital Stock	-	\$1,500,000.00
Surplus	-	300,000.00
Undivided Profits	-	55,000.00

Our Deposits on the Opening Day February 5, 1907, were - - - \$ 2,198,337.25
 On the Date of Last Call January 31, 1910 - - - 14,708,386.30
 On the Date of this Call - - - 24,840,767.10

The board of directors of this bank thanks its customers for the patronage which has resulted in the steady and satisfactory growth of business shown by the above statement. It is hoped that by careful attention to the interests intrusted to them the bank's business may continue to increase.

The officers of this bank are prepared to give courteous, personal attention to all contemplating a change in their banking relations. A Bond Department for the convenience of investors has been added to the bank's equipment.

OFFICERS

DAVID R. FORGAN, President
 H. E. OTTE, Vice Pres.
 W. D. DICKEY, Ass't Cashier
 HENRY MEYER, Ass't Cashier

ALFRED L. BAKER, Vice Pres.
 F. A. GRANDALL, Vice Pres.
 A. W. MORTON, Ass't Cashier
 WM. N. JARNAGIN, Ass't

CHAS. B. PIKE, Vice Pres.
 L. H. GRIMME, Cashier
 W. T. PERKINS, Ass't Cashier
 R. U. LANSING, Mgr. Bond Dept.

DIRECTORS

ALFRED L. BAKER, of Alfred L. Baker & Co.
 AMBROSE CHAMER, Trustee Estate of Henry J. Willing.
 EDWARD F. CARRY, Vice Pres. American Car & Foundry Company.
 A. B. DICK, President A. B. Dick Company.
 G. E. RHEINHART, Vice Pres. and Gen'l Mgr. Milwaukee Woolen Mfg. Co., Milwaukee, Ind.

STANLEY FIELD, Vice Pres. Marshall Field & Co.
 DAVID R. FORGAN, President.
 F. F. PEABODY, President Cluett, Peabody & Co.
 H. A. STILLWELL, Vice Pres. Butler Bros., Chicago, Ill.
 JOHN E. WILDER, Vice Pres. Wilder & Company.
 H. E. OTTE, Vice President

BANKS

CENTRAL HYDE
 1001 S. Wabash St.
 Capital and Surplus \$2,500,000

Harris Trust & Savings Bank
 Organized as N. W. HARRIS & Co. 1882
 INCORPORATED 1907
 CAPITAL AND SURPLUS \$2,500,000

CITIZENS TRUST & SAVINGS BANK
 INDIANA HARBOR, IND.
 John R. Florist, Pres. John A. Carlson, Cashier.
 TEL. INDIANA HARBOR-55

CITY NATIONAL BANK OF EVANSTON
 Evanston, Ill.
 J. J. Ward, Pres. Chas. Johnson, Cash.

COLONIAL TRUST & SAVINGS BANK
 205 LaSalle St.
 Capital and Surplus \$2,500,000

CONTINENTAL AND COMMERCIAL NATIONAL BANK
 100 N. Dearborn St.
 Capital and Surplus \$2,500,000

CITIZENS TRUST & SAVINGS BANK
 100 N. Dearborn St.
 Capital and Surplus \$2,500,000

CORN EXCHANGE
 100 N. Dearborn St.
 Capital and Surplus \$2,500,000

INDIANA HARBOR STATE BANK
 100 N. Dearborn St.
 Capital and Surplus \$2,500,000

INDIANA TRUST AND SAVINGS BANK
 100 N. Dearborn St.
 Capital and Surplus \$2,500,000

JACKSON PARK BANK
 100 N. Dearborn St.
 Capital and Surplus \$2,500,000

JANKOVICH J. & CO. BANK
 100 N. Dearborn St.
 Capital and Surplus \$2,500,000

DREXEL STATE BANK OF CHICAGO
 100 N. Dearborn St.
 Capital and Surplus \$2,500,000

DRIVERS DEPOSIT NATIONAL BANK
 100 N. Dearborn St.
 Capital and Surplus \$2,500,000

DOVER TRUST AND SAVINGS BANK
 100 N. Dearborn St.
 Capital and Surplus \$2,500,000

FARWELL TRUST CO.
 100 N. Dearborn St.
 Capital and Surplus \$2,500,000

FIRST NATIONAL BANK (THE)
 100 N. Dearborn St.
 Capital and Surplus \$2,500,000

FIRST NATIONAL BANK OF EAST CHICAGO, IND.
 100 N. Dearborn St.
 Capital and Surplus \$2,500,000

FIRST NATIONAL BANK OF ENGLEWOOD
 100 N. Dearborn St.
 Capital and Surplus \$2,500,000

FIRST NATIONAL BANK OF WHITING
 100 N. Dearborn St.
 Capital and Surplus \$2,500,000

FORT DEARBORN NATIONAL BANK
 100 N. Dearborn St.
 Capital and Surplus \$2,500,000

GLASER SAVINGS BANK
 100 N. Dearborn St.
 Capital and Surplus \$2,500,000

GREEK-AMERICAN BANK
 100 N. Dearborn St.
 Capital and Surplus \$2,500,000

1910 - LAKESIDE CLASSIFIED DIRECTORY - 1910

Monroe National Bank (The) 139 LaSalle.
 Harris Trust & Savings Bank (The) 204 Dearborn.

YOU will feel at home in this Bank. If your business is not handled satisfactorily, write us. We want your account.

THE MONROE NATIONAL BANK OF CHICAGO

EMERY F. BROWN, Pres. E. W. HARBEN, Vice-Pres.
 T. U. NEAL, Vice-Pres.

National Bank of Republic 171 LaSalle

THE NATIONAL BANK OF THE REPUBLIC
 Capital and Surplus \$3,000,000

National City Bank of Chicago 176 Dearborn
 National Produce Bank of Chicago (The) Clark

The Hibernian Banking Association
 S. E. Cor. Clark & Monroe Sts.

General Banking and Trust Business

OFFICERS
 John V. Clarke, President; David R. Lewis, Vice-Pres.

NORTH AVENUE STATE BANK
 100 N. Dearborn St.

NORTH SIDE STATE SAVINGS BANK
 100 N. Dearborn St.

NORTHERN TRUST COMPANY (THE)
 100 N. Dearborn St.

NORTHWEST STATE BANK
 100 N. Dearborn St.

NORTHERN TRUST AND SAVINGS BANK
 100 N. Dearborn St.

PHILIP P. BANK
 100 N. Dearborn St.

PULLMAN TRUST AND SAVINGS BANK
 100 N. Dearborn St.

RAILWAY EXCHANGE BANK
 100 N. Dearborn St.

ROSELAND STATE SAVINGS BANK
 100 N. Dearborn St.

SECURITY BANK OF CHICAGO
 100 N. Dearborn St.

SOUTH CHICAGO SAVINGS BANK
 100 N. Dearborn St.

SOUTH SIDE SAVINGS BANK
 100 N. Dearborn St.

STATE BANK OF WEST
 100 N. Dearborn St.

UNION BANK OF CHICAGO
 100 N. Dearborn St.

METROPOLITAN TRUST AND SAVINGS BANK
 100 N. Dearborn St.

MICHIGAN AVENUE
 100 N. Dearborn St.

MICHIGAN AVENUE TRUST COMPANY
 100 N. Dearborn St.

TRIBEUN BUILDING WASHINGTON PARK NATIONAL BANK
 100 N. Dearborn St.

WENDELL STATE BANK
 100 N. Dearborn St.

Capital and Surplus, \$250,000

1471 BARBERS

WESTERN TRUST & SAVINGS BANK
 12th Western Trust & Savings Bank The Rockery

Established 1878
 CAPITAL \$1,000,000

Joseph E. Otis, Pres. J. H. Wilson, V. Pres.
 Lawrence Nelson, V. Pres., William C. Cook,
 Cashier; Addison Doremus, Asst. Cashier; Albert
 C. Oden, Auditor; Louis H. Schroeder, Mgr. Bond
 Dept.; J. H. Miller, Secy. Foreign Securities Dept.;
 W. G. Walling, Secretary

WOODLAWN TRUST & SAVINGS BANK
 1204 E. 63d, tel. 1016
 8550 W. 20th, cor. Spangfield, tel. Lawa-
 2405-5772

ZELENY SAVINGS BANK
 205 LaSalle, no. cor. Adams, tel. Central-1107

CONTINENTAL AND COMMERCIAL TRUST & SAVINGS BANK
 100 N. Dearborn St.

FIRST TRUST AND SAVINGS BANK
 100 N. Dearborn St.

KRAUSE SAVINGS BANK
 1241 Milwaukee St.

MICHIGAN AVENUE TRUST CO.
 100 N. Dearborn St.

PLAMONDON & TITZCO
 32-40 S. Clinton

BRUNSWICK - BAILEY - COLLENDER CO. (THE)
 100 N. Dearborn St.

MERLE & HEANEY
 100 N. Dearborn St.

PASSOW & SONS
 100 N. Dearborn St.

BURLEY & COMPY
 100 N. Dearborn St.

PIG ALBERT & COMPANY
 100 N. Dearborn St.

ROSELAND STATE SAVINGS BANK
 100 N. Dearborn St.

SECURITY BANK OF CHICAGO
 100 N. Dearborn St.

SOUTH CHICAGO SAVINGS BANK
 100 N. Dearborn St.

SOUTH SIDE SAVINGS BANK
 100 N. Dearborn St.

STATE BANK OF WEST
 100 N. Dearborn St.

UNION BANK OF CHICAGO
 100 N. Dearborn St.

METROPOLITAN TRUST AND SAVINGS BANK
 100 N. Dearborn St.

MICHIGAN AVENUE TRUST COMPANY
 100 N. Dearborn St.

TRIBEUN BUILDING WASHINGTON PARK NATIONAL BANK
 100 N. Dearborn St.

WENDELL STATE BANK
 100 N. Dearborn St.

Barbers

Abbott, J. H. 100 N. Dearborn St.

Abbott, J. H. 100 N. Dearborn St.

Abbott, J. H. 100 N. Dearborn St.

Abbott, J. H. 100 N. Dearborn St.

Abbott, J. H. 100 N. Dearborn St.

Abbott, J. H. 100 N. Dearborn St.

Abbott, J. H. 100 N. Dearborn St.

Abbott, J. H. 100 N. Dearborn St.

Abbott, J. H. 100 N. Dearborn St.

Abbott, J. H. 100 N. Dearborn St.

Abbott, J. H. 100 N. Dearborn St.

Abbott, J. H. 100 N. Dearborn St.

Abbott, J. H. 100 N. Dearborn St.

Abbott, J. H. 100 N. Dearborn St.

Abbott, J. H. 100 N. Dearborn St.

Abbott, J. H. 100 N. Dearborn St.

BARBERS

Barbers—continued.
Angelo John 1914 W Madison
Anger from 2600 Lincoln
Angeles John 2600 Lincoln
Annon John 1025 Michigan

BARBERS

Barbers—continued.
Calkins Albert 8217 W Havenwood Park
Callahan Albert 8217 W Havenwood Park
Callahan Albert 8217 W Havenwood Park

BARBERS

Barbers—continued.
Callahan Albert 8217 W Havenwood Park
Callahan Albert 8217 W Havenwood Park
Callahan Albert 8217 W Havenwood Park

BARBERS

Barbers—continued.
Callahan Albert 8217 W Havenwood Park
Callahan Albert 8217 W Havenwood Park
Callahan Albert 8217 W Havenwood Park

BARBERS

Barbers—continued.
Callahan Albert 8217 W Havenwood Park
Callahan Albert 8217 W Havenwood Park
Callahan Albert 8217 W Havenwood Park

BARBERS

Barbers—continued.
Callahan Albert 8217 W Havenwood Park
Callahan Albert 8217 W Havenwood Park
Callahan Albert 8217 W Havenwood Park

BARBERS

1474

Barbers listed in the left column of the directory page, including names like Mason Wm A, Mason Wm A, and various other professionals.

Barbers listed in the middle column of the directory page, including names like Pommer Rudolph, Pommer Rudolph, and various other professionals.

BARBERS

1475

Barbers listed in the right column of the directory page, including names like Thomas Ousty, Thomas Ousty, and various other professionals.

BATH

BATH
Pompey & Fulton
SUNASACK R. W. CO.
HIGGINS BROS.
HOUSE & McKay COOPERAGE CO.

Barrels
Burkhartsmeier Bros.
EISZNER JOHN CO.
KRAUSE JOHN J.
WELSH CO.
McGUIN JOHN J.

Barrels
Metallic Barrel, Con-
Perry & Sons
KRAMPE'S BARBER

Barbers' Chairs
Kochs' Barber, A. Co.
Kraut & Doehal
Krampe's Barber

Barbers' Supplies
American Barber, A. Co.
Harris & Co.
DOLLIDY BROS.

Barbers' Supplies
Kochs' Barber, A. Co.
Harris & Co.
DOLLIDY BROS.

Barbers' Supplies
Kochs' Barber, A. Co.
Harris & Co.
DOLLIDY BROS.

Barbers' Supplies
Kochs' Barber, A. Co.
Harris & Co.
DOLLIDY BROS.

Barbers' Supplies
Kochs' Barber, A. Co.
Harris & Co.
DOLLIDY BROS.

Barbers' Supplies
Kochs' Barber, A. Co.
Harris & Co.
DOLLIDY BROS.

Barbers' Supplies
Kochs' Barber, A. Co.
Harris & Co.
DOLLIDY BROS.

Barbers' Supplies
Kochs' Barber, A. Co.
Harris & Co.
DOLLIDY BROS.

Barbers' Supplies
Kochs' Barber, A. Co.
Harris & Co.
DOLLIDY BROS.

Barbers' Supplies
Kochs' Barber, A. Co.
Harris & Co.
DOLLIDY BROS.

Barbers' Supplies
Kochs' Barber, A. Co.
Harris & Co.
DOLLIDY BROS.

BATH

BATH
Pompey & Fulton
SUNASACK R. W. CO.
HIGGINS BROS.

Barrels
Burkhartsmeier Bros.
EISZNER JOHN CO.
KRAUSE JOHN J.
WELSH CO.
McGUIN JOHN J.

Barrels
Metallic Barrel, Con-
Perry & Sons
KRAMPE'S BARBER

Barbers' Chairs
Kochs' Barber, A. Co.
Kraut & Doehal
Krampe's Barber

Barbers' Supplies
American Barber, A. Co.
Harris & Co.
DOLLIDY BROS.

Barbers' Supplies
Kochs' Barber, A. Co.
Harris & Co.
DOLLIDY BROS.

Barbers' Supplies
Kochs' Barber, A. Co.
Harris & Co.
DOLLIDY BROS.

Barbers' Supplies
Kochs' Barber, A. Co.
Harris & Co.
DOLLIDY BROS.

Barbers' Supplies
Kochs' Barber, A. Co.
Harris & Co.
DOLLIDY BROS.

Barbers' Supplies
Kochs' Barber, A. Co.
Harris & Co.
DOLLIDY BROS.

Barbers' Supplies
Kochs' Barber, A. Co.
Harris & Co.
DOLLIDY BROS.

Barbers' Supplies
Kochs' Barber, A. Co.
Harris & Co.
DOLLIDY BROS.

Barbers' Supplies
Kochs' Barber, A. Co.
Harris & Co.
DOLLIDY BROS.

Barbers' Supplies
Kochs' Barber, A. Co.
Harris & Co.
DOLLIDY BROS.

Barbers' Supplies
Kochs' Barber, A. Co.
Harris & Co.
DOLLIDY BROS.

BIRD

BOARDING

BOILER

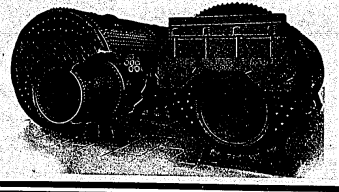
R. PFEIFFER, Pres. and Treas.

G. F. PFEIFFER, V. P. ESTABLISHED 1871.

T. F. DOWNEY, Sec. and Mgr.

CHRIS. PFEIFFER BOILER CO.

Repair Work a Specialty



Steamboat Repairs a Specialty

Marine Boilers at stationary prices. Power Plants Laid Out and Installed by Us.

Manufacturers of all kinds of Steam Boilers, Tanks, Smoke Stacks, Breechings, Jacket Kettles, Special Steel Heating Boilers and all kinds of Steel Plate Work.

Telephone Main 4399

OFFICE AND WORKS 223-225 W. Michigan St.

Boarding Houses—continued.

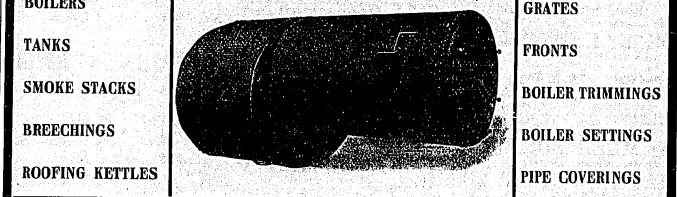
More Amos 2317 Michigan av.
Miss Mary 218 1/2 W. Lapeer
Miss Mary 218 1/2 W. Lapeer

Wm. C. Pfeiffer, Pres. and Mgr.

R. S. Pfeiffer, Secy.

P. H. Downey, Mgr.

Wm. C. Pfeiffer Boiler Works



Prompt Attention to Repairs, Day or Night
Marine Work a Specialty

DAY PHONE, WEST 451 AND 452 NIGHT PHONE, LINCOLN 1890
OFFICE AND WORKS, 1840-1842 CARROLL AVE.

Boat Builders.

American Motor Boat 1806 Michigan av.
CENTRAL BOAT WORKS, 210 South Water, under 6th av. bridge tol.

ILLINOIS BOILER CLEAN-

ING COMPOUND CO., suite 718-720
1317 1/2 Michigan av. 1885 LaSalle st. Tel. North-3217

Boiler Makers.

Amos Boiler & Tank Co. 344 Cottage Grove av.
AMERICAN BOILER WORKS, 2013 Foster Bldg. tel. Harrison-140

Boat Builders.

Amos Motor Boat 1806 Michigan av.
CENTRAL BOAT WORKS, 210 South Water, under 6th av. bridge tol.

THE JEWEL ENGINEERING CO.

FOSFORG TABLETS
502 MCHANDLER BLK TEL HAR 221

THE BABCOCK & WILCOX CO.

STIRLING
A & T. HORIZONTAL
CAHALL
RUST
WATER TUBE BOILERS

BARAGWANATH WM. & SON

BAKCOCK & WILCOX
1207 MARQUETTE BLDG. 204 DEARBORN ST.
TELEPHONE CENTRAL 6546

WAIT JAMES M. & CO.

Boiler Cleaning and Repairing.
PAGE BOILER COMPANY, 515 E. 819 Lombard, near Chicago av.

Boiler Compound.

American-German Boiler Compound Co. 309, 114 LaSalle

DEARBORN BOILER CO.

Boiler Compound Materials.
EDGE MOOR IRON CO. WATER TUBE BOILERS

EDGE MOOR IRON CO.

WATER TUBE BOILERS
1538 1st Nat'l Bank Bldg.
W.J. Williams, Mgr. Tel. Randolph 1780

Bird Fanatics—Continued.

Fisher Samuel 721 E. 43d
Pfeiffer Albert 715 1/2 Bush
Frank Eugene 5435 S. State

KAEMPFER FRED.

See above, tel. Central-2108
Kestler Henry 231 Madison
Kontny Frank 3129 S. Halsted

RELIABLE BIRD STORE

(Wholesale and Retail.)
RELIABLE BIRD STORE
(TELE), 1524 Milwaukee av.
*Birds, Goldfish and Supplies.

REX BITTERS CO.

WONNE'S DR. GESUND-
HEITS-LIKURETIV
1860 Milwaukee av. tel. Humboldt-5599

BECKLEY M. H. E.

Telephone Harrison 2847
EUGENE M. BORNHOFF
Blackboards for Stock Brokers
HIGH CLASS HOUR AND WINDOW SIGNS
THE ROKERY CHICAGO

Blacksmiths.

Balloo Frank 611 N. Walker av
Boer Ross W. 61 1/2 Green
Barraet Edward 17 Cottage Grove av

*Bleachers.

HESS WARMING & VEN-
TILATING CO. 108, 131 LaSalle, tel.
Main-1810

*Bleaching and Finishing.

COLUMBIA BLEACHING &
FINISHING CO. (THE) S. Taylor av.
cor. W. 131st, tel. West Pullman-412-413-414

*Blinds.

BECKLEY M. H. E.
80 Wabasha av.
DODGE H. B. & CO.
541-553 W. Jackson, bol.

*Blower and Blow Piping.

CYCLONE BLOW PIPE CO.
541-553 W. Jackson, bol.

*Blue Line Prints, Direct from Tracing

PEASE & C. COMPANY,
5 Adams, nr. LaSalle, tel. Franklin-692-583

*Blue Print Machines and Frames.

KEUFFEL & ESSER CO.
of New York, 111 E. Madison

*Blue Printers.

COMMERCIAL BLUE
PRINT CO., 210, 216 Clark, tel. Harrison-1011

*Blue Printers.

POST FREDERICK
CO. (THE), city salesrooms 415-215 Clark,
main office and factory, Hamilton and Waukegan

*Blowers.

Christian Alma Mrs 6883 Langley av
Clark Mary A Mrs 1171 Madison av

*Blowers.

Christian Alma Mrs 6883 Langley av
Clark Mary A Mrs 1171 Madison av

*Blowers.

Christian Alma Mrs 6883 Langley av
Clark Mary A Mrs 1171 Madison av

*Blowers.

Christian Alma Mrs 6883 Langley av
Clark Mary A Mrs 1171 Madison av

*Blowers.

Christian Alma Mrs 6883 Langley av
Clark Mary A Mrs 1171 Madison av

*Blowers.

Christian Alma Mrs 6883 Langley av
Clark Mary A Mrs 1171 Madison av

*Blowers.

Christian Alma Mrs 6883 Langley av
Clark Mary A Mrs 1171 Madison av

*Blowers.

Christian Alma Mrs 6883 Langley av
Clark Mary A Mrs 1171 Madison av

*Blowers.

Christian Alma Mrs 6883 Langley av
Clark Mary A Mrs 1171 Madison av

*Blowers.

Christian Alma Mrs 6883 Langley av
Clark Mary A Mrs 1171 Madison av

*Blowers.

Christian Alma Mrs 6883 Langley av
Clark Mary A Mrs 1171 Madison av

*Blowers.

Christian Alma Mrs 6883 Langley av
Clark Mary A Mrs 1171 Madison av

*Blowers.

Christian Alma Mrs 6883 Langley av
Clark Mary A Mrs 1171 Madison av

*Blowers.

Christian Alma Mrs 6883 Langley av
Clark Mary A Mrs 1171 Madison av

*Blowers.

Christian Alma Mrs 6883 Langley av
Clark Mary A Mrs 1171 Madison av

*Blowers.

Christian Alma Mrs 6883 Langley av
Clark Mary A Mrs 1171 Madison av

*Blowers.

Christian Alma Mrs 6883 Langley av
Clark Mary A Mrs 1171 Madison av

*Blowers.

Christian Alma Mrs 6883 Langley av
Clark Mary A Mrs 1171 Madison av

*Blowers.

Christian Alma Mrs 6883 Langley av
Clark Mary A Mrs 1171 Madison av

BOOKSELLERS

Bookellers and Stationers - continued.

Western B. & P. 1010 1st St.
Book Concerns (F.R.D.) Jennings &
Arham pub. 545 W Washington
Wiley Wm 350 W Wisconsin av

Boot and Shoe Blakers.

Alexander George 420 E Halsted
Andrews & Norman 727 W 35th
Anzell Alfonso 119 Madison

1910 - LAKESIDE CLASSIFIED DIRECTORY - 1910

BOOKSELLERS

Bookellers and Stationers - continued.

Western B. & P. 1010 1st St.
Book Concerns (F.R.D.) Jennings &
Arham pub. 545 W Washington
Wiley Wm 350 W Wisconsin av

Boot and Shoe Blakers.

Alexander George 420 E Halsted
Andrews & Norman 727 W 35th
Anzell Alfonso 119 Madison

GUTHMAN, CARPENTER

222-224 220 Franklin, tel.
Polina 1032

HARPER & KIRSCHTEN

11019 6th, 229 E Monroe

REID E. P. & CO.

1105 W Halsted Co. The 222 Monroe



Largest makers of good shoes in the world
Market and Monroe Streets

Shelved Wall: Shoe Co 81 E 215 Monroe
Shelved Shoe Co 81 E 215 Monroe

WATSON PLUMMER SHOE

CO. 203 257 Madison

WELLS M. D. CO.

100 The Great Central Shoe House, 170-176
Market, cor Adams

WELLS M. D. CO.

Monroe av, cor 6th av

BOOTS

Boots and Stationers - continued.
Andrus John 1010 1st St.
Anson Woodruff 150 W 10th

Boots and Stationers - continued.
Anson Woodruff 150 W 10th
Anson Woodruff 150 W 10th

Boots and Shoes.

Boots and Shoes.
Boots and Shoes.
Boots and Shoes.

Boots and Shoes.

Boots and Shoes.
Boots and Shoes.
Boots and Shoes.

Boots and Shoes.

Boots and Shoes.
Boots and Shoes.
Boots and Shoes.

Boots and Shoes.

Boots and Shoes.
Boots and Shoes.
Boots and Shoes.

Boots and Shoes.

Boots and Shoes.
Boots and Shoes.
Boots and Shoes.

Boots and Shoes.

Boots and Shoes.
Boots and Shoes.
Boots and Shoes.

Boots and Shoes.

Boots and Shoes.
Boots and Shoes.
Boots and Shoes.

*Boot and Shoe Stamps.

*Boot and Shoe Stamps.
*Boot and Shoe Stamps.

SOHNITZ GEO. T.

442, 182 Lake

REID CHARLES E.

210 & Ontario

WOOD G. S.

236 77 Jackson St.

Boots and Shoes.

Boots and Shoes.
Boots and Shoes.

BOOTS

Boots and Stationers - continued.
Dunn August at rear 3940 Southwest av
Dunn August at rear 3940 Southwest av

Boots and Stationers - continued.
Dunn August at rear 3940 Southwest av
Dunn August at rear 3940 Southwest av

Boots and Shoes.

Boots and Shoes.
Boots and Shoes.
Boots and Shoes.

Boots and Shoes.

Boots and Shoes.
Boots and Shoes.
Boots and Shoes.

Boots and Shoes.

Boots and Shoes.
Boots and Shoes.
Boots and Shoes.

Boots and Shoes.

Boots and Shoes.
Boots and Shoes.
Boots and Shoes.

Boots and Shoes.

Boots and Shoes.
Boots and Shoes.
Boots and Shoes.

Boots and Shoes.

Boots and Shoes.
Boots and Shoes.
Boots and Shoes.

Boots and Shoes.

Boots and Shoes.
Boots and Shoes.
Boots and Shoes.

Boots and Shoes.

Boots and Shoes.
Boots and Shoes.

1483

BOOTS

Boots and Stationers - continued.
Edman Martin 294 W Vanburner
Edman Martin 294 W Vanburner

Boots and Stationers - continued.
Edman Martin 294 W Vanburner
Edman Martin 294 W Vanburner

Boots and Shoes.

Boots and Shoes.
Boots and Shoes.
Boots and Shoes.

Boots and Shoes.

Boots and Shoes.
Boots and Shoes.
Boots and Shoes.

Boots and Shoes.

Boots and Shoes.
Boots and Shoes.
Boots and Shoes.

Boots and Shoes.

Boots and Shoes.
Boots and Shoes.
Boots and Shoes.

Boots and Shoes.

Boots and Shoes.
Boots and Shoes.
Boots and Shoes.

Boots and Shoes.

Boots and Shoes.
Boots and Shoes.
Boots and Shoes.

Boots and Shoes.

Boots and Shoes.
Boots and Shoes.
Boots and Shoes.

Boots and Shoes.

Boots and Shoes.
Boots and Shoes.

1483

BOOTS

Boots and Stationers - continued.
Hanna John 928 N Prairie av (A)
Hanna John 928 N Prairie av (A)

Boots and Stationers - continued.
Hanna John 928 N Prairie av (A)
Hanna John 928 N Prairie av (A)

Boots and Shoes.

Boots and Shoes.
Boots and Shoes.
Boots and Shoes.

Boots and Shoes.

Boots and Shoes.
Boots and Shoes.
Boots and Shoes.

Boots and Shoes.

Boots and Shoes.
Boots and Shoes.
Boots and Shoes.

Boots and Shoes.

Boots and Shoes.
Boots and Shoes.
Boots and Shoes.

Boots and Shoes.

Boots and Shoes.
Boots and Shoes.
Boots and Shoes.

Boots and Shoes.

Boots and Shoes.
Boots and Shoes.
Boots and Shoes.

Boots and Shoes.

Boots and Shoes.
Boots and Shoes.
Boots and Shoes.

Boots and Shoes.

Boots and Shoes.
Boots and Shoes.

BOOTS

Boots and Stationers - continued.
Jensen Andrew 400 D 29th
Jensen Andrew 400 D 29th

Boots and Stationers - continued.
Jensen Andrew 400 D 29th
Jensen Andrew 400 D 29th

Boots and Shoes.

Boots and Shoes.
Boots and Shoes.
Boots and Shoes.

Boots and Shoes.

Boots and Shoes.
Boots and Shoes.
Boots and Shoes.

Boots and Shoes.

Boots and Shoes.
Boots and Shoes.
Boots and Shoes.

Boots and Shoes.

Boots and Shoes.
Boots and Shoes.
Boots and Shoes.

Boots and Shoes.

Boots and Shoes.
Boots and Shoes.
Boots and Shoes.

Boots and Shoes.

Boots and Shoes.
Boots and Shoes.
Boots and Shoes.

Boots and Shoes.

Boots and Shoes.
Boots and Shoes.
Boots and Shoes.

Boots and Shoes.

Boots and Shoes.
Boots and Shoes.

BOTTLETS

Bottlers. (Ale, Beer and Porter.) Baker Wm. B. 5799 LaSalle...

*Bottlers. (Ye Olds Inn Ale, Beer, Sparkling Ale and Soda.) KEELEY BREWING...

*Box Lathes. TUTTLE FREDERICK W. 10, 36 Randolph...

*Box Makers. ACME BOX CO. 619 to 621 S. Clinton...

ANHEUSER-BUSCH BREWING ASSN. Chicago Branch...

The Liquid Carbons Company. Bottle Machinery and Supplies...

*Boxes. ACME BOX CO. 619 to 621 S. Clinton...

*Boxes and Barrels. BANNER BOX CO. 1302 to 1304 N. Morgan...

ATLAS BREWING CO. 2107 to 2129 The Island av. tel. Canal-6611

Chicago Specialty Box. 1304 Grand av. tel. Monroe-2087

*Boxes. AMERICAN BOX CO. 619 to 621 S. Clinton...

*Boxes and Barrels. WELSH BOX CO. 1331 Wabash av. tel. Calumet-1918

BIRK BROS. BREWING CO. 3515 to 1229 Webster av. tel. Lincoln-400-40

Chicago Specialty Box. 1304 Grand av. tel. Monroe-2087

*Boxes. AMERICAN BOX CO. 619 to 621 S. Clinton...

*Boxes and Barrels. WELSH BOX CO. 1331 Wabash av. tel. Calumet-1918

BLAZT VAL BREWING CO. (Bottling Department), N. Union, cor. V. Brie...

Chicago Specialty Box. 1304 Grand av. tel. Monroe-2087

*Boxes. AMERICAN BOX CO. 619 to 621 S. Clinton...

*Boxes and Barrels. WELSH BOX CO. 1331 Wabash av. tel. Calumet-1918

CAVOY BREWING CO. 4801 South Park av. tel. Lincoln-4000

Chicago Specialty Box. 1304 Grand av. tel. Monroe-2087

*Boxes. AMERICAN BOX CO. 619 to 621 S. Clinton...

*Boxes and Barrels. WELSH BOX CO. 1331 Wabash av. tel. Calumet-1918

BRASS

Brass Foundries and Finishers. ADAMS & WESTLAKE CO. (THE) 315 W. Ontario...

Brass Foundries and Finishers. ADAMS & WESTLAKE CO. (THE) 315 W. Ontario...

Brass Foundries and Finishers. ADAMS & WESTLAKE CO. (THE) 315 W. Ontario...

Brass Foundries and Finishers. ADAMS & WESTLAKE CO. (THE) 315 W. Ontario...

Brass Foundries and Finishers. ADAMS & WESTLAKE CO. (THE) 315 W. Ontario...

Brass Foundries and Finishers. ADAMS & WESTLAKE CO. (THE) 315 W. Ontario...

Brass Foundries and Finishers. ADAMS & WESTLAKE CO. (THE) 315 W. Ontario...

Brass Foundries and Finishers. ADAMS & WESTLAKE CO. (THE) 315 W. Ontario...

Brass Foundries and Finishers. ADAMS & WESTLAKE CO. (THE) 315 W. Ontario...

Brass Foundries and Finishers. ADAMS & WESTLAKE CO. (THE) 315 W. Ontario...

Brass Foundries and Finishers. ADAMS & WESTLAKE CO. (THE) 315 W. Ontario...

Brass Foundries and Finishers. ADAMS & WESTLAKE CO. (THE) 315 W. Ontario...

Brass Foundries and Finishers. ADAMS & WESTLAKE CO. (THE) 315 W. Ontario...

Brass Foundries and Finishers. ADAMS & WESTLAKE CO. (THE) 315 W. Ontario...

Brass Foundries and Finishers. ADAMS & WESTLAKE CO. (THE) 315 W. Ontario...

Brass Foundries and Finishers. ADAMS & WESTLAKE CO. (THE) 315 W. Ontario...

Brass Foundries and Finishers. ADAMS & WESTLAKE CO. (THE) 315 W. Ontario...

Brass Foundries and Finishers. ADAMS & WESTLAKE CO. (THE) 315 W. Ontario...

Brass Foundries and Finishers. ADAMS & WESTLAKE CO. (THE) 315 W. Ontario...

Brass Foundries and Finishers. ADAMS & WESTLAKE CO. (THE) 315 W. Ontario...

Brass Foundries and Finishers. ADAMS & WESTLAKE CO. (THE) 315 W. Ontario...

Brass Foundries and Finishers. ADAMS & WESTLAKE CO. (THE) 315 W. Ontario...

Brass Foundries and Finishers. ADAMS & WESTLAKE CO. (THE) 315 W. Ontario...

Brass Foundries and Finishers. ADAMS & WESTLAKE CO. (THE) 315 W. Ontario...



Make Anything in Brass, Aluminum and other Metals. Chas. McNeill, Pres. 440-452 So. Jefferson St. Tel. Haymarket 741 CHICAGO

Brass Foundries and Finishers. ADAMS & WESTLAKE CO. (THE) 315 W. Ontario...

Brass Foundries and Finishers. ADAMS & WESTLAKE CO. (THE) 315 W. Ontario...

Brass Foundries and Finishers. ADAMS & WESTLAKE CO. (THE) 315 W. Ontario...

Brass Foundries and Finishers. ADAMS & WESTLAKE CO. (THE) 315 W. Ontario...

Brass Foundries and Finishers. ADAMS & WESTLAKE CO. (THE) 315 W. Ontario...

Brass Foundries and Finishers. ADAMS & WESTLAKE CO. (THE) 315 W. Ontario...

Brass Foundries and Finishers. ADAMS & WESTLAKE CO. (THE) 315 W. Ontario...

Brass Foundries and Finishers. ADAMS & WESTLAKE CO. (THE) 315 W. Ontario...

Brass Foundries and Finishers. ADAMS & WESTLAKE CO. (THE) 315 W. Ontario...

Brass Foundries and Finishers. ADAMS & WESTLAKE CO. (THE) 315 W. Ontario...

Brass Foundries and Finishers. ADAMS & WESTLAKE CO. (THE) 315 W. Ontario...

Brass Foundries and Finishers. ADAMS & WESTLAKE CO. (THE) 315 W. Ontario...

Brass Foundries and Finishers. ADAMS & WESTLAKE CO. (THE) 315 W. Ontario...

Brass Foundries and Finishers. ADAMS & WESTLAKE CO. (THE) 315 W. Ontario...

Brass Foundries and Finishers. ADAMS & WESTLAKE CO. (THE) 315 W. Ontario...

Brass Foundries and Finishers. ADAMS & WESTLAKE CO. (THE) 315 W. Ontario...

Brass Foundries and Finishers. ADAMS & WESTLAKE CO. (THE) 315 W. Ontario...

Brass Foundries and Finishers. ADAMS & WESTLAKE CO. (THE) 315 W. Ontario...

Brass Foundries and Finishers. ADAMS & WESTLAKE CO. (THE) 315 W. Ontario...

Brass Foundries and Finishers. ADAMS & WESTLAKE CO. (THE) 315 W. Ontario...

BREWERS

Brewers - continued.
National Brew...
Northwestern...

Chicago Bridge & Iron Works
Fredsted L. P. Co.
Sheeler H. Co.

Mathis Brothers
New York Blower
American Clay M.

Chicago Brick Co.
Illinois Brick Co.
National Brick.

Wacker & Birk
West Side Brewery Co.

Pohlman Brewing Co.
Chicago Brewers.

C. H. Keyser Sign Co.
Mark Manufacturing Co.

Harris Arthur & Co.

1488

Jenkins & Reynolds
Kimball S. S. Brick Co.

American Bridge Co.
Chicago Bridge & Iron Works.

Chicago Brick Co.
Illinois Brick Co.

National Brick.

Wacker & Birk.

West Side Brewery Co.

Pohlman Brewing Co.

Chicago Brewers.

C. H. Keyser Sign Co.

Mark Manufacturing Co.

Harris Arthur & Co.

BROKERS

German City Bldg
Chicago Bldg

Chicago Bldg

Chicago Bldg

Chicago Bldg

Chicago Bldg

Chicago Bldg

Chicago Bldg

Chicago Bldg

Chicago Bldg

Chicago Bldg

Chicago Bldg

Chicago Bldg

Chicago Bldg

Chicago Bldg

Chicago Bldg

Chicago Bldg

Chicago Bldg

Chicago Bldg

Chicago Bldg

Chicago Bldg

Chicago Bldg

Chicago Bldg

Chicago Bldg

Chicago Bldg

Chicago Bldg

Chicago Bldg

Chicago Bldg

Chicago Bldg

Chicago Bldg

Chicago Bldg

Chicago Bldg

Chicago Bldg

Chicago Bldg

Chicago Bldg

Chicago Bldg

Chicago Bldg

Chicago Bldg

Chicago Bldg

Chicago Bldg

Chicago Bldg

Chicago Bldg

Chicago Bldg

Chicago Bldg

Chicago Bldg

Chicago Bldg

Chicago Bldg

Chicago Bldg

Chicago Bldg

Chicago Bldg

Chicago Bldg

Chicago Bldg

Chicago Bldg

Chicago Bldg

Chicago Bldg

Chicago Bldg

Chicago Bldg

Chicago Bldg

Chicago Bldg

BROKERS

Chicago Bldg

Chicago Bldg

Chicago Bldg

Chicago Bldg

Chicago Bldg

Chicago Bldg

Chicago Bldg

Chicago Bldg

Chicago Bldg

Chicago Bldg

Chicago Bldg

Chicago Bldg

Chicago Bldg

Chicago Bldg

Chicago Bldg

Chicago Bldg

Chicago Bldg

Chicago Bldg

Chicago Bldg

Chicago Bldg

Chicago Bldg

Chicago Bldg

Chicago Bldg

Chicago Bldg

Chicago Bldg

Chicago Bldg

Chicago Bldg

Chicago Bldg

Chicago Bldg

Chicago Bldg

Chicago Bldg

Chicago Bldg

Chicago Bldg

Chicago Bldg

Chicago Bldg

Chicago Bldg

Chicago Bldg

Chicago Bldg

Chicago Bldg

Chicago Bldg

Chicago Bldg

Chicago Bldg

Chicago Bldg

Chicago Bldg

Chicago Bldg

Chicago Bldg

Chicago Bldg

Chicago Bldg

Chicago Bldg

Chicago Bldg

Chicago Bldg

Chicago Bldg

Chicago Bldg

Chicago Bldg

Chicago Bldg

Chicago Bldg

Chicago Bldg

Chicago Bldg

Chicago Bldg

Chicago Bldg

Chicago Bldg

Chicago Bldg

Chicago Bldg

Chicago Bldg

Chicago Bldg

Chicago Bldg

Chicago Bldg

Chicago Bldg

Chicago Bldg

Chicago Bldg

Chicago Bldg

Chicago Bldg

Chicago Bldg

Chicago Bldg

Chicago Bldg

Chicago Bldg

Chicago Bldg

Chicago Bldg

Chicago Bldg

Chicago Bldg

Chicago Bldg

Chicago Bldg

Chicago Bldg

Chicago Bldg

Chicago Bldg

Chicago Bldg

Chicago Bldg

Chicago Bldg

Chicago Bldg

Chicago Bldg

Chicago Bldg

Chicago Bldg

Chicago Bldg

Chicago Bldg

Chicago Bldg

Chicago Bldg

Chicago Bldg

Chicago Bldg

Chicago Bldg

Chicago Bldg

Chicago Bldg

Chicago Bldg

Chicago Bldg

Chicago Bldg

Chicago Bldg

Chicago Bldg

Chicago Bldg

Chicago Bldg

Chicago Bldg

Chicago Bldg

Chicago Bldg

Chicago Bldg

Chicago Bldg

Chicago Bldg

Chicago Bldg

Chicago Bldg

Chicago Bldg

Chicago Bldg

Chicago Bldg

Chicago Bldg

Chicago Bldg

Chicago Bldg

Chicago Bldg

Chicago Bldg

Chicago Bldg

Chicago Bldg

Chicago Bldg

Chicago Bldg

Chicago Bldg

Chicago Bldg

Chicago Bldg

Chicago Bldg

Chicago Bldg

Chicago Bldg

Chicago Bldg

Chicago Bldg

Chicago Bldg

Chicago Bldg

Chicago Bldg

Chicago Bldg

Chicago Bldg

Chicago Bldg

Chicago Bldg

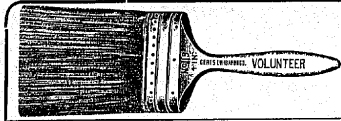
Chicago Bldg

Chicago Bldg

BROKERS

1490

BRUSHES



Established 1850

Incorporated 1881

Tel. Main-282 f, all Depts.

GERTS, LUMBARD & CO.

BRUSH MAKERS

BRUSHES OF ALL KINDS MADE TO ORDER

OFFICE AND SAMPLE ROOM

208 and 210 Randolph Street



ESTABLISHED 1851

JOHN H. HULTS, President

WOLFE BRUSH CO.

BRUSH MANUFACTURERS, PITTSBURG, PENN.

All kinds of Brushes Made to Order and Carried in Stock

CHICAGO OFFICES AND WAREHOUSE

Coco Cola Building, 1322-1328 Washab Avenue

C. H. STRUBLE,

Manager and General Western Sales Agent

PHONE CALUMET 4906

Brokers (Stocks and Bonds) - cont'd.

Brokers (Stocks and Bonds) - cont'd.
Hess & Co 100, 207 Michigan St
Hess & Co 100, 207 Michigan St

RUSSELL, BREWSTER & RUSSELL J. B. & CO.

RUSSELL, BREWSTER & RUSSELL J. B. & CO.
CO 137 Adams St Central-1789

SCHFEELS B. H. & CO.

SCHFEELS B. H. & CO.
150 LaSalle St Franklin-1600

SHEARSON, HAMMILL & CO.

SHEARSON, HAMMILL & CO.
Congressional National Bank bldg tel. 400-2442

SLAUGHTER A. O. & CO.

SLAUGHTER A. O. & CO.
130 Monroe St Central-260-646 foreign dept

VON FRANTZ & CO.

VON FRANTZ & CO.
164 LaSalle

WESTERN STOCK & BOND

WESTERN STOCK & BOND
CO 100, 120 LaSalle St Franklin-312

WIRE FRANK E. & CO.

WIRE FRANK E. & CO.
LaSalle 400, 120 LaSalle St Franklin-312

ZEILER, FAIRMAN & CO.

ZEILER, FAIRMAN & CO.
CO 410, 200 LaSalle St Franklin-330

CROWELL CHAS. A.

CROWELL CHAS. A.
60 Washab St rooms 403 and 409 tel. Central-1972

JACKSON WM. H. CO.

JACKSON WM. H. CO.
185 Michigan St

THE STANDARD COMPANY

THE STANDARD COMPANY
Chicago & North Western Ry. W. 15th & LaSalle Sts.
PHONE HARRISON 3116

AMERICAN ART BRONZE

AMERICAN ART BRONZE
FOUNDRY COMPANY Julia Berenson,
room 401-402-403 W. LaSalle St. Automatic-30

ARNSTEIN EUGENE

ARNSTEIN EUGENE
(INCORP) 4011 to 4016 Westab St tel. 400-2440

BARRETT W. L. & CO.

BARRETT W. L. & CO.
Chicago Bronze Mfg Co 134 1068

DIKRAENFELD B. F. & CO.

DIKRAENFELD B. F. & CO.
1018 W. LaSalle tel. West-2857

FUCHS & LANG MFG. CO.

FUCHS & LANG MFG. CO.
1115 S. Canal St. Automatic-3107

MOTT J. L. IRON WORKS

MOTT J. L. IRON WORKS
717 E. 1st St. Automatic-3107

AMERICAN ART BRONZE

AMERICAN ART BRONZE
FOUNDRY CO. Julia Berenson,
room 401-402-403 W. LaSalle St. Automatic-30

AMERICAN BROOM MFG. CO.

AMERICAN BROOM MFG. CO.
(Not Inc) Chester J. Boon, prop. 1833 Walnut

CHICAGO BROOM MFG. CO.

CHICAGO BROOM MFG. CO.
CO 364 Dearborn St

AMERICAN ART BRONZE

AMERICAN ART BRONZE
FOUNDRY COMPANY Julia Berenson,
room 401-402-403 W. LaSalle St. Automatic-30

PORTER WM. J.

PORTER WM. J.
4168 Wallace, tel. Vards-1831

CHICAGO BRUSH COMPANY,

CHICAGO BRUSH COMPANY,
129 LaSalle

GERTS, LUMBARD & CO.

GERTS, LUMBARD & CO.
208 and 210 Randolph

GORNELL & SONS,

GORNELL & SONS,
112 W. Indiana St.

WOLFE BRUSH CO.

WOLFE BRUSH CO.
1322-1328 Washab St. tel. Calumet-4000

HUGHES HENRY L.

HUGHES HENRY L.
407, 78 Monroe

AMERICAN ART BRONZE

AMERICAN ART BRONZE
FOUNDRY COMPANY Julia Berenson,
room 401-402-403 W. LaSalle St. Automatic-30

AMERICAN ART BRONZE

AMERICAN ART BRONZE
FOUNDRY COMPANY Julia Berenson,
room 401-402-403 W. LaSalle St. Automatic-30

AMERICAN ART BRONZE

AMERICAN ART BRONZE
FOUNDRY COMPANY Julia Berenson,
room 401-402-403 W. LaSalle St. Automatic-30

AMERICAN ART BRONZE

AMERICAN ART BRONZE
FOUNDRY COMPANY Julia Berenson,
room 401-402-403 W. LaSalle St. Automatic-30

BRUSHES

1491

BUILDING

ADVANCE INFORMATION ON BUILDING CONSTRUCTION POWER PLANTS, ETC.

The Western Building Report Co.

171 Washington St., Chicago, Illinois Telephone Main 2889

PITTSBURG ST. LOUIS CLEVELAND DENVER DETROIT LOS ANGELES

PHONE MAIN 2889 The Western Building Report Co.

Chicago, June 1st, 1910. Archt. still rec. tenders, and contracts to be awarded in a few days. Rptd. April 21st, and May 3rd, 1910.

RESIDENCE \$30,000

Highland Park, Ill. Owner, C. H. Thayer, 2 Sherman St., Chicago, Ill. Archt., R. E. Seyfarth, 206 La Salle St., Chicago, Ill. Brick and Stone, 2-story, 33x60 feet.

Hot Water Heat, Modern Plumbing, Art Glass. Vacuum Cleaning System, Comb. Light Fixtures, Electric Dumb Waiter, Tile, Marble and Mosaic Work.

1016938

THIS SHEET IS A CONFIDENTIAL COMMUNICATION PREPARED AT THE REQUEST OF OUR SUBSCRIBERS FOR THEIR EXCLUSIVE USE

CHURCHES, SCHOOLS, THEATRES, LODGES, FEDERAL AND PUBLIC BUILDINGS, HOSPITALS, HOTELS, APARTMENT BLDGS.

The United States Daily Builder

Home Office, 93, 95 Fifth Avenue, Chicago, Ill.

RESIDENCES, BUSINESS BLOCKS, BANKS, OFFICE BUILDINGS, LIGHT AND POWER MFG. PLANTS, BLDG. PERMITS AND LOANS

SUBSCRIPTION RATES: CHICAGO AND COOK COUNTY, \$12.00 PER YEAR, IN ADVANCE UNITED STATES, \$100.00 PER YEAR, IN ADVANCE

Telephone Main 2889

HAISLER BROS. CO.

MAKERS OF BRUSHES OF ALL KINDS



Machine Cylinder Brush



Card Cylinder Brush

288-294 SO. WATER STREET

Office, 256-258 Lake Street

Tels. Main-827, Automatic-9628

MACHINE BRUSHES OUR SPECIALTY

Brushes (Manufacturers) - continued.

Brushes (Manufacturers) - continued.
Poppeno Henry H 1216 N Roby
Bridgman Henry Co 715 S Centre at

PETERSON H.

PETERSON H.
3220 S State tel. Dearborn-4004

WESTON G. W. CO.

WESTON G. W. CO.
7221-7223 Wisconsin St

WESTERN BRUSH CO.

WESTERN BRUSH CO.
7 Colburn near 120-122, 8th St

JOHN H. W. - MANVILLE

JOHN H. W. - MANVILLE
CO 37 and 38 Michigan St

THOMPSON JAMES & CO.

THOMPSON JAMES & CO.
James W Curran near 142-144 W. 11th St

BUILDERS' HARDWARE

BUILDERS' HARDWARE
HODGE & HOMER CO. 549-551 W Madison

WILCOX COMPANY

WILCOX COMPANY
3000 Milwaukee St. Irving Park-444 and 40th and Fullerton avs

FURHILL BUILDING MATERIALS

FURHILL BUILDING MATERIALS
101-103 W 2nd St. West-708 and 8 1/2th St. and Harvard

GENERAL ROOFING MFG. CO.

GENERAL ROOFING MFG. CO.
2525-2531 Lawrence St. nr. 32d, tel. Calumet-2843

HOPKINS H. H. CO.

HOPKINS H. H. CO.
50 Dearborn St. Central-1030

WATSON H. F. CO.

WATSON H. F. CO.
105 W. LaSalle, Verobona LaSalle and 34th Water

BIRD F. W. & SON

BIRD F. W. & SON
1524 Milwaukee St. tel. Harrison-88

FRIESTEDT L. P. CO.

FRIESTEDT L. P. CO.
1025-1028 Bridge St. tel. Randolph-200

AMERICAN CONTRACTOR

AMERICAN CONTRACTOR
PUBLISHING CO 40 Dearborn

DODGE F. W. CO. (THE)

DODGE F. W. CO. (THE)
(Dobson Reporter) 842 Manhattan bldg

BUILDING

1492

BUTTONS

Building and Loan Associations.
Andra Bldg. & Loan Assn. 410 S. Franklin St.
C. P. Bldg. & Loan Assn. 1301 W. Harrison St.

Burg Spouts.
WILSON & CORTEZ & CO.
230 and 241 Lake

Burgs, Cut and Compressed Vents and Plugs.
REDLICH MANUFACTURING CO.
437 to 647 W. Oak St. North-570

Burgury Insurance.
AMERICAN BONDING CO. OF BALTIMORE
501-503 The Hookery
Tel. Wash. 2886

Fidelity & Casualty Co.
W. N. Y. A. B. Shaw & Co.
200 W. Wabash

London Guarantee & Acceptance Co.
CHAMBERLAIN & CO.
210 W. Madison St.

Mass. Bonding & Ins. Co.
OF HOSPITAL, MASS.
225 W. Adams St.

United States Fidelity & Guaranty Co.
OF BOSTON, MASS.
100 W. Madison St.

Gall & Co.
Burials and Urns

Gott-Lapp Co. (THE)
Decorators Burlap Co.

H. B. Wiggins's Sons Co.
Fab-Rik-O-Na

Burning Brands.
HANSON O. H.
44 Cedar

Business Colleges.
ASSOCIATED INSTITUTE.
L. M. O. A.
100 W. Washington St.

Barrett Shorthand
PRINTING
615 W. Madison St.

Bryant & Stratton Business College
11-13 Randolph

Chicago Business College
110 W. Madison St.

Englewood Business College
2223-2235 S. Halsted near W. 6th St.

God's Shorthand & Typewriting School
218 and 217 W. Madison St.

Greig School
1010 and 11th St. Wabash at Col.

Jones North Chicago Business College
450 Garden at W.

Metropolitan Business College
156 Wabash at 4th

Northwest Business College
109 N. Wabash at 2nd

O'Donnell's Business College
110 W. Madison St.

Orin's Business College
1123 S. La Salle

Pierson Business Standard School
802 Wabash at 9th

Wallace Commercial College
475 Dearborn

Watson's Business College
1436 S. La Salle

White's College
OF SHORTHAND
424 1/2 E. 1st at Oakland-1002

Business Systems.
LIBRARY BUREAU
190 Wabash at cor Monroe

Business Systems.
JONES LAURENCE & CO.
774 Chicago Chamber of Commerce Bldg.
100 W. Madison St.

Moses William E.
Butcher's Cooling Rooms and Fixtures.
MCCRAY REFRIGERATOR CO.
95 Wabash at 2nd

Butcher's Refrigerators and Tools.
ORR & LOCKETT HARDWARE CO.
71 and 73 Randolph

Bender Julius.
Butcher's Tools and Supplies.
DAENNICKE PAUL J. CO.
210 S. La Salle

Northwestern Dairy Co.
Bowman Dairy Co.
311 W. Lake

Friedman Mfg. Co.
Union Stock Yards at York-553

Butter Cartons.
VAVILA E. H. & CO.
1002 and 1004 S. Canal

Butter Colors.
THE HELLER & MERZ CO.
Manufacturers of 'ALDERNEY' Butter Color

Butter Tubs and Butter Packages.
CREAMERY PACKAGING CO.
816 W. Madison St.

Butter and Cheese.
American Farm Products Co.
1820 Belmont

Butter A. H. & Co.
220 South Water at Franklin-564

Butter Manufacturers.
INDEPENDENT BUTTON & MACHINE CO.
3034-3042 West Roosevelt

Butter Manufacturers.
SCOVILL MFG. CO.
Military, naval, society, railroad, police, etc.

Butter Manufacturers.
POPP JAMES.
401 S. Clinton at Harrison-2290

Butter and Cheese.
Almer Geo.
1850 W. Chicago at Jackson-1216

Butter Manufacturers.
Dexter Mfg. Co.
800 W. Madison St.

Butter Manufacturers.
Moses William E.
1507, 20th St. at Harrison-0408

Butcher's Refrigerators and Tools.
WOLF, SAYER & HELLER (INC.)
300 Wabash at cor Peoria

Butcher's Refrigerators and Tools.
ORR & LOCKETT HARDWARE CO.
71 and 73 Randolph

Butcher's Supplies.
BENDER JULIUS.
901-909 W. Madison cor Peoria

Butcher's Tools and Supplies.
DAENNICKE PAUL J. CO.
210 S. La Salle

Butcher and Egg Dealers.
SPANGENBERG & CO.
48 W. Kinzie

Butter and Eggs.
NABER H. G. & CO.
2337 W. Madison St. at Calumet-305

Butter Manufacturers.
MORSE & ROSS.
1112 W. Madison St.

Butteries.
BRAUN GEO. P. COMPANY.
896-897 W. Monroe

Friedman Mfg. Co.
Hammond G. H. Co.
2100 South Yards, tel. York-523

Butter Machines and Button Parts.
BAY STATE MFG. CO.
600-610 Blue Island at cor Monroe-525

Button Manufacturers.
ILLINOIS MODERN MACHINE CO.
415 W. Jackson at cor Harrison-358

Button Manufacturers.
SABEL J. BUTTON CO.
Not ice 5029 S. State

Button Manufacturers.
LAKE SIDE BUTTON CO.
100 E. 5th St. at Midway-318

Button Manufacturers.
MAXANT & CO.
217 W. Illinois st. Main-4530

Button Manufacturers.
INDEPENDENT BUTTON & MACHINE CO.
3034-3042 West Roosevelt

Button Manufacturers.
LUSKY, WHITE & COLLIDGE.
110 111 and 113 E. Lake

Button Manufacturers.
CORBIN CABINET LOCK CO.
410 S. Clinton at Harrison-2290

Button Manufacturers.
AYERS-RANSOM-BAUER CO.
111 W. Madison St.

Button Manufacturers.
FINE SIDE BOARDS.
Chicago Cabinet Co.

Button Manufacturers.
CALCULUM LIGHTS.
WHEATON G. S.
210 W. Erie at North-583

Button Manufacturers.
KIELGASS LEHMAN CO.
208 W. Kinzie, tel. Franklin-315

Button Manufacturers.
FELT & TARRANT MFG. CO.
1717 to 1720 N. Paulina sales

Button Manufacturers.
MORSE CHAS. R. MFG. CO.
office and factory, 176-181 Madison

Button Manufacturers.
AMERICAN COLORTYPE CO.
Miles Bldg. 70 Monroe, tel. Central-070

Button Manufacturers.
SIOUX REFERENCE.
CALENDARS AND MANUFACTURERS

Button Manufacturers.
AMERICAN KEY CAN CO.
1051 and 1054 Marquette Bldg. tel. Central-3151

Button Manufacturers.
RUSSAKOFF I. CAN CO.
Manufacturers of the No. 321 to 351 Voder

Buttons.
WILSON & CORTEZ & CO.
230 and 241 Lake

Buttons.
WHEELER & WATSON.
111 W. Madison St.

Buttons.
WHEELER & WATSON.
111 W. Madison St.

Buttons.
WHEELER & WATSON.
111 W. Madison St.

Buttons.
WHEELER & WATSON.
111 W. Madison St.

Buttons.
WHEELER & WATSON.
111 W. Madison St.

Buttons.
WHEELER & WATSON.
111 W. Madison St.

Buttons.
WHEELER & WATSON.
111 W. Madison St.

Buttons.
WHEELER & WATSON.
111 W. Madison St.

Buttons.
WHEELER & WATSON.
111 W. Madison St.

Buttons.
WHEELER & WATSON.
111 W. Madison St.

Buttons.
WHEELER & WATSON.
111 W. Madison St.

Buttons.
WHEELER & WATSON.
111 W. Madison St.

Buttons.
WHEELER & WATSON.
111 W. Madison St.

Buttons.
WHEELER & WATSON.
111 W. Madison St.

Buttons.
WHEELER & WATSON.
111 W. Madison St.

Buttons.
WHEELER & WATSON.
111 W. Madison St.

Buttons.
WHEELER & WATSON.
111 W. Madison St.

Buttons.
WHEELER & WATSON.
111 W. Madison St.

Buttons.
WHEELER & WATSON.
111 W. Madison St.

1910 — LAKESIDE CLASSIFIED DIRECTORY — 1910

A. W. SHERLOCK CALKING CONTRACTOR

Sidewalks and Floors Calked and Made Water Tight. Window Frames, Vaults and Stone Steps Calked and Painted. Room 217 Chamber of Commerce Building

Buttons.
EMBROIDERY STAMPING.
WOOD T. R.
34-42, 62 State

Buttons.
SALOMON WM. E. & CO.
109 La Salle at Central-2140

Buttons.
LAKESIDE BUTTON CO.
100 E. 5th St. at Midway-318

Buttons.
CORBIN CABINET LOCK CO.
410 S. Clinton at Harrison-2290

Buttons.
CORBIN CABINET LOCK CO.
410 S. Clinton at Harrison-2290

Buttons.
FELT & TARRANT MFG. CO.
1717 to 1720 N. Paulina sales

Buttons.
AMERICAN COLORTYPE CO.
Miles Bldg. 70 Monroe, tel. Central-070

Buttons.
SIOUX REFERENCE.
CALENDARS AND MANUFACTURERS

Buttons.
RUSSAKOFF I. CAN CO.
Manufacturers of the No. 321 to 351 Voder

1910 — LAKESIDE CLASSIFIED DIRECTORY — 1910

RITCHIE W. & CO.

Decorators Supply Co.
123 S. 24th St. at North-1415

Decorators Supply Co.
123 S. 24th St. at North-1415

Decorators Supply Co.
123 S. 24th St. at North-1415

Decorators Supply Co.
123 S. 24th St. at North-1415

Decorators Supply Co.
123 S. 24th St. at North-1415

Decorators Supply Co.
123 S. 24th St. at North-1415

Decorators Supply Co.
123 S. 24th St. at North-1415

Decorators Supply Co.
123 S. 24th St. at North-1415

Decorators Supply Co.
123 S. 24th St. at North-1415

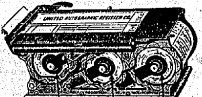
Decorators Supply Co.
123 S. 24th St. at North-1415

CARVERS



THESE HUBS REVOLVE

The hubs revolve with the upper rolls which are mounted upon shafts, allowing the bill to be extracted from the register without any friction whatever, insuring perfect registration.



THESE HUBS REVOLVE

UNITED AUTOGRAPHIC REGISTER CO.

E. J. BARKER, Pres. and Gen. Mgr. MANUFACTURERS OF

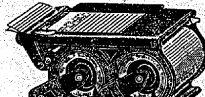
AUTOGRAPHIC REGISTERS AND SUPPLIES. Printed, Plain and Inked Paper in Rolls; Uniform Bills of Lading, Delivery Receipts, Cash and Charge Sale Tickets for All Makes of Registers. Printed Statements for Adding Machines.

Write or PHONE FRANKLIN 639

and a representative will call at your convenience.

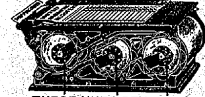
556 AND 558 WEST JACKSON BOUL.

CEMENT



THESE HUBS REVOLVE

The only register made without splines or loose parts.



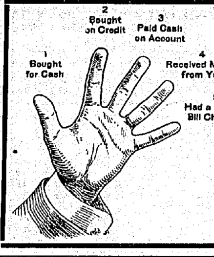
THESE HUBS REVOLVE

Five Things That Happen in Groceries and Meat Markets

- 1. Bought for cash. 2. Bought on credit. 3. Paid cash on account. 4. Received money from you. 5. Had a coin or bill changed.

When a customer leaves your store he must have done one of five things. These five things are all that can happen in your store. If these five things are taken care of properly, mistakes and losses cannot occur.

The National Cash Register Co. 47-49 E. Randolph Street Chicago, Illinois



1. Bought for cash. 2. Bought on credit. 3. Paid cash on account. 4. Received money from you. 5. Had a coin or bill changed.

Celluloid. (Sole Manufacturers of) CELLULOID CO. (THE) 284 E. Adams St. Franklin-1704

GERAGHTY & CO. Celluloid Advertising, Sheet Material and Printing Automobile Curtains Tel. Main 4495 61 LaSalle St.

PARISIAN NOVELTY CO. 224 and LaSalle

GUMBO CEMENT CO. 32 Market and 259 N. Randolph, tel. Frank-110-358

F. KOPECKY & SON Cement Contractors 2534-2536 Thompson Street

PERKINS E. B. 2048 Plummer, tel. Keeble-2937

PLEAS CONCRETE CONSTRUCTION CO. 658, 100 Washington St.

SIMPSON CONSTRUCTION CO. 724 Chamber of Commerce Bldg. tel. Main-583

STANDARD CONCRETE CONSTRUCTION CO. 1109, 154 LaSalle

WITT AUGUST, 509 E. Western at tel. Keeble-1117

ALPHA PORTLAND CEMENT CO. 1009-1008, 100 LaSalle tel. Franklin-1521

DEE WM. E. COMPANY, 1009-1008, 100 LaSalle tel. Franklin-1521

LAFFEL A. J. & CO. 1116 South Chicago at tel. Hyde Park-073

PERKINS E. B. 2048 Plummer, tel. Keeble-2937

THE WALDHEIM CEMETERY COMPANY

FRED J. ZUTTERMEISTER, President WM. H. FEINDT, J. V. Pres

H. N. LAURENTZ, Treasurer FRED. MAAS, Secretary



GENERAL CEMETERY OFFICES, Forest Park, Ill. JACOB SCHWAR Superintendent TELEPHONES Forest Park-797 Forest Park-757

MARTIN & COMPTON, 191 and 193 Clark, tel. Central-109

SCHMIDT G. O., 442, 154 Lake

BARNETT ROY, J., 16, 127 Washington, Franklin-1742

P. F. BIESEN SIDEWALK CONTRACTOR 825 and 810 Corn, Exchange Bldg. 206 LaSalle, tel. Franklin-60

BLOME RUDOLPH S., 401 Bank & 21st, tel. Central-12 and Central-384

GRAFF ALBERT & HOFFER & CO., 414 Chamber of Commerce Bldg., tel. Main-114 and Adams-254

ILLINOIS PORTLAND CEMENT CO., 411, 217 W. Lincoln, tel. Main-4630

G. KEHL & SON CO. Cement and Concrete Paving Contractors

F. KOPECKY & SON Cement Contractors 2534-2536 Thompson Street

LARSEN H. P., Humboldt-1707 and 1642 N. Rockwell, tel. Main-516

PERKINS E. B., 2048 Plummer, tel. Keeble-2937

PLEAS CONCRETE CONSTRUCTION CO. 658, 100 Washington St.

SIMPSON CONSTRUCTION CO. 724 Chamber of Commerce Bldg. tel. Main-583

STANDARD CONCRETE CONSTRUCTION CO. 1109, 154 LaSalle

WITT AUGUST, 509 E. Western at tel. Keeble-1117

ALPHA PORTLAND CEMENT CO. 1009-1008, 100 LaSalle tel. Franklin-1521

DEE WM. E. COMPANY, 1009-1008, 100 LaSalle tel. Franklin-1521

LAFFEL A. J. & CO. 1116 South Chicago at tel. Hyde Park-073

PERKINS E. B. 2048 Plummer, tel. Keeble-2937

CEMENT

GARDEN CITY SAND CO. (THE) 705-709-710 Chamber of Commerce

KNICKERBOCKER ICE CO., 171 LaSalle

MEACHAM & WRIGHT CO., 205 and 210 Corn, Exchange Bldg. 206 LaSalle, tel. Franklin-60

MOURN P. J. & CO., 207, 188 Washington

MOUNTING THOMAS CO., 204, 152 Chamber of Commerce Bldg. tel. Franklin-60

STEARNS LIME & STONE CO., 105 E. Randolph

UNIVERSAL PORTLAND CEMENT CO., 115 Adams St. Phone Randolph 323

UTICA HYDRAULIC CEMENT, Meacham & Wright Co. 205 and 210 Corn, Exchange Bldg. 206 LaSalle, tel. Franklin-60

F. KOPECKY & SON Cement Contractors 2534-2536 Thompson Street

PERKINS E. B., 2048 Plummer, tel. Keeble-2937

PLEAS CONCRETE CONSTRUCTION CO. 658, 100 Washington St.

SIMPSON CONSTRUCTION CO. 724 Chamber of Commerce Bldg. tel. Main-583

STANDARD CONCRETE CONSTRUCTION CO. 1109, 154 LaSalle

WITT AUGUST, 509 E. Western at tel. Keeble-1117

ALPHA PORTLAND CEMENT CO. 1009-1008, 100 LaSalle tel. Franklin-1521

DEE WM. E. COMPANY, 1009-1008, 100 LaSalle tel. Franklin-1521

LAFFEL A. J. & CO. 1116 South Chicago at tel. Hyde Park-073

PERKINS E. B. 2048 Plummer, tel. Keeble-2937

CHEESE

*Chain Manufacturers, (Automobile and Street Power Transmission.)

MORSE CHAIN CO., 201 N. Dearborn, tel. Central-778

*Chains, (Horse and Sleigh.)

*Chain Manufacturers, (Automobile and Street Power Transmission.)

*Chain Manufacturers, (Automobile and Street Power Transmission.)

*Chain Manufacturers, (Automobile and Street Power Transmission.)

*Chain Manufacturers, (Automobile and Street Power Transmission.)

*Chain Manufacturers, (Automobile and Street Power Transmission.)

*Chain Manufacturers, (Automobile and Street Power Transmission.)

*Chain Manufacturers, (Automobile and Street Power Transmission.)

*Chain Manufacturers, (Automobile and Street Power Transmission.)

*Chain Manufacturers, (Automobile and Street Power Transmission.)

*Chain Manufacturers, (Automobile and Street Power Transmission.)

*Chain Manufacturers, (Automobile and Street Power Transmission.)

*Chain Manufacturers, (Automobile and Street Power Transmission.)

*Chain Manufacturers, (Automobile and Street Power Transmission.)

*Chain Manufacturers, (Automobile and Street Power Transmission.)

*Chain Manufacturers, (Automobile and Street Power Transmission.)

*Chain Manufacturers, (Automobile and Street Power Transmission.)

*Chain Manufacturers, (Automobile and Street Power Transmission.)

*Chain Manufacturers, (Automobile and Street Power Transmission.)

*Chain Manufacturers, (Automobile and Street Power Transmission.)

*Chain Manufacturers, (Automobile and Street Power Transmission.)

*Chain Manufacturers, (Automobile and Street Power Transmission.)

*Chain Manufacturers, (Automobile and Street Power Transmission.)

*Chain Manufacturers, (Automobile and Street Power Transmission.)

*Chain Manufacturers, (Automobile and Street Power Transmission.)

*Chain Manufacturers, (Automobile and Street Power Transmission.)

*Chain Manufacturers, (Automobile and Street Power Transmission.)

*Chain Manufacturers, (Automobile and Street Power Transmission.)

*Chain Manufacturers, (Automobile and Street Power Transmission.)

*Chain Manufacturers, (Automobile and Street Power Transmission.)

*Chain Manufacturers, (Automobile and Street Power Transmission.)

*Chain Manufacturers, (Automobile and Street Power Transmission.)

*Chain Manufacturers, (Automobile and Street Power Transmission.)

*Chain Manufacturers, (Automobile and Street Power Transmission.)

*Chain Manufacturers, (Automobile and Street Power Transmission.)

*Chain Manufacturers, (Automobile and Street Power Transmission.)

*Chain Manufacturers, (Automobile and Street Power Transmission.)

*Chain Manufacturers, (Automobile and Street Power Transmission.)

*Chain Manufacturers, (Automobile and Street Power Transmission.)

*Chain Manufacturers, (Automobile and Street Power Transmission.)

*Chain Manufacturers, (Automobile and Street Power Transmission.)

CHEESE

*Chain Manufacturers, (Automobile and Street Power Transmission.)

*Chain Manufacturers, (Automobile and Street Power Transmission.)

*Chain Manufacturers, (Automobile and Street Power Transmission.)

*Chain Manufacturers, (Automobile and Street Power Transmission.)

*Chain Manufacturers, (Automobile and Street Power Transmission.)

*Chain Manufacturers, (Automobile and Street Power Transmission.)

*Chain Manufacturers, (Automobile and Street Power Transmission.)

*Chain Manufacturers, (Automobile and Street Power Transmission.)

*Chain Manufacturers, (Automobile and Street Power Transmission.)

*Chain Manufacturers, (Automobile and Street Power Transmission.)

*Chain Manufacturers, (Automobile and Street Power Transmission.)

*Chain Manufacturers, (Automobile and Street Power Transmission.)

*Chain Manufacturers, (Automobile and Street Power Transmission.)

*Chain Manufacturers, (Automobile and Street Power Transmission.)

*Chain Manufacturers, (Automobile and Street Power Transmission.)

*Chain Manufacturers, (Automobile and Street Power Transmission.)

*Chain Manufacturers, (Automobile and Street Power Transmission.)

*Chain Manufacturers, (Automobile and Street Power Transmission.)

*Chain Manufacturers, (Automobile and Street Power Transmission.)

*Chain Manufacturers, (Automobile and Street Power Transmission.)

*Chain Manufacturers, (Automobile and Street Power Transmission.)

*Chain Manufacturers, (Automobile and Street Power Transmission.)

*Chain Manufacturers, (Automobile and Street Power Transmission.)

*Chain Manufacturers, (Automobile and Street Power Transmission.)

*Chain Manufacturers, (Automobile and Street Power Transmission.)

*Chain Manufacturers, (Automobile and Street Power Transmission.)

*Chain Manufacturers, (Automobile and Street Power Transmission.)

*Chain Manufacturers, (Automobile and Street Power Transmission.)

*Chain Manufacturers, (Automobile and Street Power Transmission.)

*Chain Manufacturers, (Automobile and Street Power Transmission.)

*Chain Manufacturers, (Automobile and Street Power Transmission.)

*Chain Manufacturers, (Automobile and Street Power Transmission.)

*Chain Manufacturers, (Automobile and Street Power Transmission.)

*Chain Manufacturers, (Automobile and Street Power Transmission.)

*Chain Manufacturers, (Automobile and Street Power Transmission.)

*Chain Manufacturers, (Automobile and Street Power Transmission.)

*Chain Manufacturers, (Automobile and Street Power Transmission.)

*Chain Manufacturers, (Automobile and Street Power Transmission.)

*Chain Manufacturers, (Automobile and Street Power Transmission.)

*Chain Manufacturers, (Automobile and Street Power Transmission.)

*Chain Manufacturers, (Automobile and Street Power Transmission.)

*Chain Manufacturers, (Automobile and Street Power Transmission.)

*Chain Manufacturers, (Automobile and Street Power Transmission.)

CIGARS and Tobacco—continued.

Ascher Carl 1828 Lombard...
Baker John 1828 Lombard...
Baker John 1828 Lombard...
Baker John 1828 Lombard...
Baker John 1828 Lombard...

CIGARS

Janney Harry J. 1008 N Clark...
Janney Harry J. 1008 N Clark...
Janney Harry J. 1008 N Clark...
Janney Harry J. 1008 N Clark...

CIGARS

Mark John 1811 W Madison...
Mark John 1811 W Madison...
Mark John 1811 W Madison...
Mark John 1811 W Madison...

CIGARS

Reed Louis 1030 Michigan...
Reed Louis 1030 Michigan...
Reed Louis 1030 Michigan...
Reed Louis 1030 Michigan...

CIGARS

Arnold Adolph P. 604 S State...
Arnold Adolph P. 604 S State...
Arnold Adolph P. 604 S State...
Arnold Adolph P. 604 S State...

Circular Letters.

Chicago Addressing Co.
Chicago Addressing Co.
Chicago Addressing Co.
Chicago Addressing Co.

CHRISTY LETTERS.

Trade Circular
Trade Circular
Trade Circular
Trade Circular

GAMBLE A. J. & CO.

King John J.
King John J.
King John J.
King John J.

TRADE CIRCULAR

Trade Circular
Trade Circular
Trade Circular
Trade Circular

IMITATION TYPEWRITING

Trade Circular
Trade Circular
Trade Circular
Trade Circular

JOSEPH HERBERT L. & CO.

Trade Circular
Trade Circular
Trade Circular
Trade Circular

WENDNAGEL & CO.

Trade Circular
Trade Circular
Trade Circular
Trade Circular

ADAMS & PIGOTT

Cleaners of Kid Gloves, Silks
and Woolen Fabrics.
Tel. Douglas-378 314-315 WABASH AVE.

AMERICAN DYEING

and Cleaning Works.
155 and 437 W Madison Street

BLOCK JULIUS C.

4410 and 4412 State

DIETSCHE WEAVER CHASH.

Established 1872

R. GRAHAM'S STEAM DYE WORKS

155 and 437 West Madison Street

MICHAUX B. & CO.

1215-1217 State St. Central-491

BAUM C. F. CO.

1215-1217 State St. Central-491

THE WORLD.

1215-1217 State St. Central-491

ARVIN SIMON.

1215-1217 State St. Central-491

SIEMAN MORRIS & CO.

1314-1316 S. State

CHICAGO CLOAK CO.

1315 State St. Harrison-8779

CLOTHES

AMERICAN CLOAK REPAIR

1315 State St. Harrison-8779

KUEHL CLOAK CO.

1315 State St. Harrison-8779

DAIRCH MFG. CO.

1315 State St. Harrison-8779

SPAULDING & CO.

1315 State St. Harrison-8779

ANSONIA CLOAK CO.

1315 State St. Harrison-8779

GILBERT WM. L. CLOAK

1315 State St. Harrison-8779

HABU AUTOMATIC CLOAK CO.

1315 State St. Harrison-8779

HOWARD E. CLOAK

1315 State St. Harrison-8779

LOFTIS BROS. & CO.

1315 State St. Harrison-8779

NEW HAVEN CLOAK

1315 State St. Harrison-8779

WATERBURY CLOAK CO.

1315 State St. Harrison-8779

ALLEN BENJ. & CO.

1315 State St. Harrison-8779

KUEHL CLOAK CO.

1315 State St. Harrison-8779

HARDING BROTHERS (INC.)

1315 State St. Harrison-8779

WIGGINS S. A. & CO.

1315 State St. Harrison-8779

BRAITHWAITE C. W. CO.

1315 State St. Harrison-8779

EMPIRE SPONGING AND

1315 State St. Harrison-8779

GARDEN CITY SPONGING

1315 State St. Harrison-8779

CHICAGO DRYER COM-

1315 State St. Harrison-8779

Imitation Typewriting and Addressing Co. 106-110 Randolph St. Phone Central 3333 CHICAGO

COAL

Coal and Wood—continued.

Coal and Wood—continued. Baker Co 1285 Milwaukee... Coal and Wood—continued. Baker Co 1285 Milwaukee... Coal and Wood—continued. Baker Co 1285 Milwaukee...

1508

Cooney Ross 3110 S Halsted... Cooney Ross 3110 S Halsted... Cooney Ross 3110 S Halsted... Cooney Ross 3110 S Halsted...

COAL

Johnson Lawrence near 1000 School... Johnson Lawrence near 1000 School... Johnson Lawrence near 1000 School... Johnson Lawrence near 1000 School...

COAL

McDonald John 1000 S Halsted... McDonald John 1000 S Halsted... McDonald John 1000 S Halsted... McDonald John 1000 S Halsted...

COAL

McDonald John 1000 S Halsted... McDonald John 1000 S Halsted... McDonald John 1000 S Halsted... McDonald John 1000 S Halsted...

COAL

Peterson Otto 887 Sedgewick... Peterson Otto 887 Sedgewick... Peterson Otto 887 Sedgewick... Peterson Otto 887 Sedgewick...

COFFEE

Shelby Christian 1500 N 51st av... Shelby Christian 1500 N 51st av... Shelby Christian 1500 N 51st av... Shelby Christian 1500 N 51st av...

COFFEE

Wright & Co 1011 W 39th... Wright & Co 1011 W 39th... Wright & Co 1011 W 39th... Wright & Co 1011 W 39th...

UTILITY CODE CO. (THE)

UTILITY CODE CO. (THE) (not incl.) 430 W. 55th. Normal-5434... UTILITY CODE CO. (THE) (not incl.) 430 W. 55th. Normal-5434... UTILITY CODE CO. (THE) (not incl.) 430 W. 55th. Normal-5434...

A. LOGAN MOYEL, President

J. N. MULLAN, Sec'y and Auditor.

COMMERCIAL ADJUSTMENT COMPANY

COLLECTIONS AND ADJUSTMENTS EVERYWHERE

SUITE 1214-15 FORT DEARBORN BUILDING 134 MONROE STREET

New York Office SINGER BUILDING, 149 BROADWAY Telephone Corlandt 2604

Phones Randolph 2363 Randolph 2364 Private Exchange All Departments

Coffins. (Manufacturers.) Hill Oaklot Co 844 W North av HILL F. H. CO. 1414-15 Washington Bldg cor. Morgan. HORNTHAL & COMPANY, 1233 W 13th, Washab av. Illinois Colln Co 25th & State NATIONAL CASKET CO. Office 1104 and 1109 N Canal, mfrs rooms 381-385 Washab av, factory Delmore and Division st. Standard Colln & Casket Mfrs Co 1029 W Chicago av

*Coils. (Copper and Brass.) HARRIS ALTHUIS & CO. Furniture Co., E. Harris & Bro. 212, 214, 216 and 218 Curtis

*Coils and Stamps. GREEN BEN G. 1525 Masonic Temple

*Coils and Stamps. STEVENS & CO. 60 Dearborn.

*Coke. ADDY MATTHEW & CO. 725 The Dockery, tel. Harrison-3108

DOHOFF & JOYCE CO. (THE) 548 Railway Exchange o Jackson

MARLING FRANKLIN CO. (THE) Division, North Branch sta. and Cherry av. tel. Harrison-2200

PICKANES, BROWN & CO. 1740 Commercial Nat. Bank Bldg. tel. Harrison-2200

ROGERS, BROWN & CO. 1615, 200 LaSalle tel. Franklin-220

*Coke, Coal and Wood. HAYES JOHN J. Room 745 9th, Columbia Bldg.

*Cold Storage. ASHLAND COLD STORAGE AND WAREHOUSE CO. 45th and Lomb, Union Stock Yards, tel. Yards-290

BARBER A. H. & CO. 229 South Water, tel. Franklin-354

BOOTH FISHERS CO. 109-121 W. Kinzie

ILLINOIS COLD STORAGE CO. 41st and Justine

UNION COLD STORAGE & WAREHOUSE CO. 421 N. State

WESTERN COLD STORAGE CO. 421 N. State

*Collars and Cuffs. (Manufacturers.) FLEISHIL, COON & CO. 908-910 Franklin, tel. Harrison-0807

Collars and Cuffs. (Manufacturers and Wholesale Dealers.) CLUETT, PEABODY & CO. Telephone Harrison 4845 316 to 324 Fifth Avenue

*Collars and Cuffs. FIBERLOID CO. (THE) 153 Market, tel. Michigan

*Collecting. (International Law and Collections.) CLAUSSENIUS H. & CO. 80 Dearborn, tel. Central-0509

*Collecting Agencies. WESTERN MERCHANTILE & ADJUSTMENT CO. 1239 Ashland Bk. tel. Harrison-201

Collecting Agents. Adjustment Co of America 1201, 104 Dearborn Albrights 314, 2nd Dearborn

CHICAGO CREDITORS ASSOCIATION CO. 200, 25th av. tel. Main-1615

*Coke. ADDY MATTHEW & CO. 725 The Dockery, tel. Harrison-3108

DOHOFF & JOYCE CO. (THE) 548 Railway Exchange o Jackson

MARLING FRANKLIN CO. (THE) Division, North Branch sta. and Cherry av. tel. Harrison-2200

PICKANES, BROWN & CO. 1740 Commercial Nat. Bank Bldg. tel. Harrison-2200

ROGERS, BROWN & CO. 1615, 200 LaSalle tel. Franklin-220

*Coke, Coal and Wood. HAYES JOHN J. Room 745 9th, Columbia Bldg.

*Cold Storage. ASHLAND COLD STORAGE AND WAREHOUSE CO. 45th and Lomb, Union Stock Yards, tel. Yards-290

BARBER A. H. & CO. 229 South Water, tel. Franklin-354

BOOTH FISHERS CO. 109-121 W. Kinzie

ILLINOIS COLD STORAGE CO. 41st and Justine

UNION COLD STORAGE & WAREHOUSE CO. 421 N. State

WESTERN COLD STORAGE CO. 421 N. State

*Collars and Cuffs. (Manufacturers.) FLEISHIL, COON & CO. 908-910 Franklin, tel. Harrison-0807

Collars and Cuffs. (Manufacturers and Wholesale Dealers.) CLUETT, PEABODY & CO. Telephone Harrison 4845 316 to 324 Fifth Avenue

*Collars and Cuffs. FIBERLOID CO. (THE) 153 Market, tel. Michigan

*Collecting. (International Law and Collections.) CLAUSSENIUS H. & CO. 80 Dearborn, tel. Central-0509

North American Protective Assn 21 N 224 Washab av Peoples Legal & Collection Agency 31, 97 Washab Ingleton Physicians Defense Co 505, 29 Dearborn

*Collection Agencies. ALBRIGHTS ASSOCIATION CO. 200, 25th av. tel. Main-1615

*Collection Agencies. BOYD FRANK L. 400, 125 LaSalle, tel. Main-3030

BUREAU OF JUSTICE, (Gen. W. Byers mngr. 92 LaSalle tel. Main-2003)

DUN R. G. & CO. 1214 E. New York Life Bldg. tel. Central-277

EARLY'S MERCANTILE AGENCY. 1214 E. New York Life Bldg. tel. Central-277

COLEMAN S. EVERETT, Atty. LAW OFFICE AND COLLECTIONS 3908 COTTAGE GROVE AVENUE Telephone Douglas 3041

HOBS MERCANTILE SERVICE. 5th & Robbs mngr. 11033 Michigan av (Hoseland)

LOGAN MERCANTILE AGENCY (THE) 2765 W. Division, tel. Humboldt-58

MARSHALL J. W. & CO. 901-904 Unity Bldg. 79 Dearborn, tel. Randolph-788

Marshall Mercantile Agency A. M. STENBERG, Mngr. 97 CLARK STREET TEL. CENTRAL 1690

McILVAINE ADJUSTMENT COMPANY. 1401-1405, 181 LaSalle, tel. Humboldt-111

MERCHANTS ADJUSTMENT CO. 601, 181 LaSalle, tel. Main-700

MOODY M. T. & CO. 715 Dearborn Bldg. tel. Main-9018

PUBLISHERS COMMERCIAL LITHON, 908, 112 Dearborn, tel. Central-1002

SNOW CHURCH & CO. 912, 171 LaSalle, tel. Central-908 and 909

SPRAGUE'S MERCANTILE AGENCY. 1001 to 1013 10th Temple

TUOSCHERER H. P. 1408, 80 Clark tel. Central-2891

WEST SIDE LANDLORDS PROTECTIVE BUREAU AND COLLECTIONS, 1103 W. Chicago av tel. Monroe-1678

*College Goods. (Collars, Caps and Postivity Furnishings, Pins and Caps.) COLLEGE GOODS College & Fraternity Novelty Co. (Inc.) 4348-50 Cottage Grove Ave. TELEPHONE OAKLAND 4116

*Colonial Columns. HEGENER RUDOLPH CO. 6222 to 6244 Harbor av. tel. South Chicago-650

*Color Card Manufacturer and Label Varnisher. MORRISON CHARLES C. 820-822 S. Clinton

*Color Manufacturers. VALENTINE & COMPANY, 1908, 379 Dearborn

*Color Printers. AMERICAN COLORTYPE CO. Mastic Bldg. 75 Monroe, tel. Central-6765

COLUMBIAN THREE COLOR CO. HIGH-CLASS ART and THREE-COLOR PRINTING 22nd and Calumet Avenue

CONTINENTAL ART CO. HIGH CLASS THREE-COLOR PRINTING New Process Water Color Printing Under Original Patents Monroe & Aberdeen Sts.

MANZ ENGRAVING CO. 75 EAST MONROE STREET

METROPOLITAN SYNDICATE PRESS, 108-128 N. Jefferson, tel. Monroe-2502

REGENSTEINER COLORTYPE CO. 1201-1209 W. Jackson Bldg.

STIPPLE COLOR ENGRAVING AND PRINTING CO. 846 Dearborn Ave. Phone Lake View 1442

*Color Printing. UNITED STATES PRINTING CO. (THE) Washab av sw. cor. Randolph

Combs. (Manufacturers.) Standard 308 782 St. Liberty

*Commercial Colleges. CHICAGO BUSINESS COLLEGE, 67 Washab av cor. Randolph, tel. Humboldt-111

METROPOLITAN BUSINESS COLLEGE, 150 Washab av. cor. Dearborn, cor. Adams, tel. 1500 N. Dearborn

STANDARD SCHOOL (THE) W. Dearborn, bet. 533 Wrightwood av. cor. Florence av

*Commercial Paper. BECKER A. G. & CO. (INCORPORATED) BOND & GOODWIN, 100, 284 LaSalle, tel. Harrison-609

BURR GEO. H. & CO. 607 The Bowers, tel. Harrison-609

COMMONWEALTH COMMERCIAL AGENCY (THE), 821 The Bowers, tel. Harrison-670

DICKINSON EDWARD & CO. 145 Monroe, tel. Randolph-515

GOLDMAN, SACHS & CO. 206, LaSalle, tel. Central-0681

We make SLOW ACCOUNTS Produce QUICK ASSETS

We do it for others and can do it for you We do not promise you "something for nothing"

Nor ask a subscription fee... Nor sell you report blanks, etc., etc.

Our Business is MAKING COLLECTIONS and we make them, too



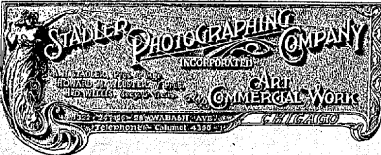
Phones Cent. 5374-6627

ASK FOR OUR REFERENCES

Fort Dearborn Building

134 MONROE STREET, CHICAGO

PHOTOGRAPHS



10,000 Feet Floor Space devoted EXCLUSIVELY to Commercial Photographic Work. A Plant as complete as long experience and careful study of a science will enable the enthusiast to plan and realize. Telephone Calumet 4390-1

Competent Men with Correct Outfit Available at all Times for Local or Foreign Work

Commercial Paper - continued. HATHAWAY, SMITH, FOLDS & CO. 205 LaSalle, tel. Randolph-1858

MERCANTILE CREDIT COMPANY We buy the active open accounts and cash the daily sales of wholesale dealers, jobbers and manufacturers

MERRILL, COX & CO. 407 The Roostery, tel. Wabash-2418

SOLOMON CHARLES H. 101 N. Ashland, tel. West-6717

Commission Merchants. Arnold J. H. Co. 1704 414, 42 River

Commission Merchants. ROGERS H. W. & BRO. 700-710-718 River, tel. Hub-110

Commission Merchants. LYNCH & MCKEE CO. 145 Van Buren and 116 Dearborn

Commission Merchants. LYNCH & MCKEE CO. 145 Van Buren and 116 Dearborn

BOGERT, MALTY & CO. (INCORP.) 203 to 208, 145 Van Buren

Commission Merchants. ROGERS H. W. & BRO. 700-710-718 River, tel. Hub-110

Commission Merchants. LYNCH & MCKEE CO. 145 Van Buren and 116 Dearborn

Commission Merchants. LYNCH & MCKEE CO. 145 Van Buren and 116 Dearborn

Commission Merchants. LYNCH & MCKEE CO. 145 Van Buren and 116 Dearborn

Commission Merchants. LYNCH & MCKEE CO. 145 Van Buren and 116 Dearborn

Commission Merchants. LYNCH & MCKEE CO. 145 Van Buren and 116 Dearborn

Commission Merchants. LYNCH & MCKEE CO. 145 Van Buren and 116 Dearborn

Commission Merchants. LYNCH & MCKEE CO. 145 Van Buren and 116 Dearborn

Commission Merchants. LYNCH & MCKEE CO. 145 Van Buren and 116 Dearborn

Commission Merchants. LYNCH & MCKEE CO. 145 Van Buren and 116 Dearborn

Commission Merchants. LYNCH & MCKEE CO. 145 Van Buren and 116 Dearborn

Commission Merchants. LYNCH & MCKEE CO. 145 Van Buren and 116 Dearborn

Commission Merchants. LYNCH & MCKEE CO. 145 Van Buren and 116 Dearborn

Commission Merchants. LYNCH & MCKEE CO. 145 Van Buren and 116 Dearborn

Commission Merchants. LYNCH & MCKEE CO. 145 Van Buren and 116 Dearborn

Commission Merchants. LYNCH & MCKEE CO. 145 Van Buren and 116 Dearborn

Commission Merchants. LYNCH & MCKEE CO. 145 Van Buren and 116 Dearborn

Commission Merchants. LYNCH & MCKEE CO. 145 Van Buren and 116 Dearborn

Commission Merchants. LYNCH & MCKEE CO. 145 Van Buren and 116 Dearborn

Commission Merchants. LYNCH & MCKEE CO. 145 Van Buren and 116 Dearborn

Commission Merchants. LYNCH & MCKEE CO. 145 Van Buren and 116 Dearborn

Commission Merchants. LYNCH & MCKEE CO. 145 Van Buren and 116 Dearborn

Commission Merchants. LYNCH & MCKEE CO. 145 Van Buren and 116 Dearborn

COMMISSION

Concrete Block Machinery. IDEAL CONCRETE MACHINERY CO. 970 Old Colony bldg.

Concrete Construction. BLOME RUDOLPH S. MIDDLEBURY BROS. CO.

CENTRAL PAVING CO. COOPER S. L. & CO. GRAFF ALBERT & HOFFER & CO.

JACKSON GEORGE W. (INC.) LYNCH JOHN & CO. MCEVOY WM. P. & CO.

PERKINS E. B. PLEAS CONCRETE CONSTRUCTION CO.

PORTLAND CONCRETE STEVEN CONSTRUCTION CO.

STANDARD CONCRETE CONSTRUCTION CO. R. E. & CO.

WITT AUGUST. BORDEN'S CONDENSED MILK CO.

KADE CEMENT CLAMP CO. CHICAGO BUILDERS SPECIALTIES CO.

CHAIN BELT CO. MARSH & CAPRON MFG. CO. CHICAGO BUILDERS SPECIALTIES CO.

DRINK STANDARD MOWER WORKS. INTER-STATE EQUIPMENT & ENGINEERING CO.

Concrete Mixers. MARSH & CAPRON MFG. CO. Concrete Piling. RAYMOND CONCRETE

NORTHWESTERN REINFORCED METAL CO. CONCRETE REINFORCEMENT. AMERICAN STEEL & WIRE

CONCRETE STEEL PRODUCTS. SWITH F. P. WIRE & IRON WORKS.

BARBEE WIRE AND WIRE WORKS. CHICAGO BUILDERS SPECIALTIES CO.

DOLE & SHEPARD UNITED STATES CRUSHED STONE COMPANY.

BROWNELL LIME ROVE. CONDENSED MILK. BORDEN'S CONDENSED MILK CO.

BORDEN'S CONDENSED MILK CO. Malted Milk Dept. CONDENSED MILK DEPT.

WASHABAY AVE. JACOBSON JOHN. WHEELER C. H. MFG. CO.

BARAGWANATH WM. & SON. HARRIS ARTHUR & CO.

STIER HERMAN MFG. CO. CAMP H. B. CO. (THE) McROY CLAY WORKS.

CAMP H. B. CO. (THE) McROY CLAY WORKS. RUCKHEIM BROS. & ECKSTEIN.

CONFECTIONERS

Confectioners. GIACOMO ALLEGRETTI COMPANY. GIACOMO ALLEGRETTI, Pres.

Confectioners. GUNTHER'S. 150 State St., 119 La Salle St., 184 Michigan Ave.

Confectioners. AMBROSIA CHOCOLATE. American Candy Sales Co.

Confectioners. AUERBACH & SONS. 303 E. Randolph

Confectioners. BUGLER & GOEBEL CO. 212 and 218 W. Ontario

Confectioners. CENTRAL CANDY CO. 101-103 W. Washington

Confectioners. FARLEY CANDY CO. 718-720 N. Wabash

Confectioners. GUEST HARRY B. CANDY CO. 101-103 W. Washington

Confectioners. NATIONAL CANDY COMPANY. 311-313 W. Superior

Confectioners. PAN CONFECTION. 114-116 W. Superior

Confectioners. RUCKHEIM BROS. & ECKSTEIN. 101-103 W. Washington

CONFECTIONERS

1512

CONFECTIONERY

Confectioners (Meats and Wool Dealers) continued.
Serra Benelli 628 N. Halsted
Barnes John 1250 W. Huron

SHIELDS M. COMPANY,
2024 N. Johnson
2024 N. Johnson
2024 N. Johnson

"Confectioners' Cases.
(Kitchen, Tea, Soap, Cakes and Sweets)
KNICKERBOCKER
6345 C. Co., 220-230 N. Clinton, tel. Main

"Confectioners' Copper Work and Machine Work.
HOLMBERG CHAS. & CO.
31-43 W. Michigan

"Confectioners' Galatins.
AMERICAN GUM CO.
123-125 W. Kinzie, tel. Main-2069

"Confectioners' Machinery and Tools.
CONFECTIONERS AND
RAEBERS SUPPLY CO., 11 and 13 E
KATZINGER EDWARD CO.
120 and 122 N. Peoria

"Confectioners' Supplies.
ALLEN J. W. & CO.
11-11 1/2 W. DuSable, tel. Main-141-1448

CHAPMAN & SMITH
COMPANY, 191-123 Washington boul
CON. CO. 22, 24 and 30 Michigan Ave.

HABICHT, BRAUN &
HILKER & BLETSCH
COMPANY, Genl. Office, 614 Austin St.,
PEBLE C. D. M. CO.

"Confectioners' Tools, Machinery and Copper Work.
SAVAGE BROS. CO.
810 to 822 W. Michigan st.

Confectionery and Fruits.
Alphon Lattin 805 S. Halsted
Alphon Lattin 805 S. Halsted

Alphon Lattin 805 S. Halsted
Alphon Lattin 805 S. Halsted
Alphon Lattin 805 S. Halsted

Alphon Lattin 805 S. Halsted
Alphon Lattin 805 S. Halsted
Alphon Lattin 805 S. Halsted

Alphon Lattin 805 S. Halsted
Alphon Lattin 805 S. Halsted
Alphon Lattin 805 S. Halsted

CONFECTIONERY

Alphon Lattin 805 S. Halsted
Alphon Lattin 805 S. Halsted
Alphon Lattin 805 S. Halsted

CONFECTIONERY

1513

CONFECTIONERY

Alphon Lattin 805 S. Halsted
Alphon Lattin 805 S. Halsted
Alphon Lattin 805 S. Halsted

Alphon Lattin 805 S. Halsted
Alphon Lattin 805 S. Halsted
Alphon Lattin 805 S. Halsted

CONFECTIONERY

Confectionery and Fruits—continued. Kneopfe Frank 1012 S Washburn av... Kneopfe Frank 1012 S Washburn av... Kneopfe Frank 1012 S Washburn av...

1514

McDermott Michael 1000 W Washburn... McDermott Michael 1000 W Washburn... McDermott Michael 1000 W Washburn...

CONFECTIONERY

McDonald Mary 2844 W Washburn... McDonald Mary 2844 W Washburn... McDonald Mary 2844 W Washburn...

CONFECTIONERY

McDonald Mary 2844 W Washburn... McDonald Mary 2844 W Washburn... McDonald Mary 2844 W Washburn...

1515

McDonald Mary 2844 W Washburn... McDonald Mary 2844 W Washburn... McDonald Mary 2844 W Washburn...

CONFECTIONERY

Confectionery and Fruits - continued.
Wells Bros 2708 S State
Wenderson 2708 S State
Wenderson 2708 S State

CONTRACTORS

Alman F & Co 4109 Archer
A. A. M. Co 1100 Broadway
AMERICAN ENGINEERING & CONSTRUCTION CO. 912, 50

CONTRACTORS

Alman F & Co 4109 Archer
A. A. M. Co 1100 Broadway
AMERICAN ENGINEERING & CONSTRUCTION CO. 912, 50

CONTRACTORS

Blasler Herman 4761 W Kings
FITZSIMONS & CONNELL CO. (CHIEF) 2015 and 1014 7th
NEEL CO. (CHIEF) 2015 and 1014 7th

CONTRACTORS

Blasler Herman 4761 W Kings
FITZSIMONS & CONNELL CO. (CHIEF) 2015 and 1014 7th
NEEL CO. (CHIEF) 2015 and 1014 7th

CONTRACTORS

Blasler Herman 4761 W Kings
FITZSIMONS & CONNELL CO. (CHIEF) 2015 and 1014 7th
NEEL CO. (CHIEF) 2015 and 1014 7th

CONTRACTORS

Blasler Herman 4761 W Kings
FITZSIMONS & CONNELL CO. (CHIEF) 2015 and 1014 7th
NEEL CO. (CHIEF) 2015 and 1014 7th

CONTRACTORS

Blasler Herman 4761 W Kings
FITZSIMONS & CONNELL CO. (CHIEF) 2015 and 1014 7th
NEEL CO. (CHIEF) 2015 and 1014 7th

CONTRACTORS

Blasler Herman 4761 W Kings
FITZSIMONS & CONNELL CO. (CHIEF) 2015 and 1014 7th
NEEL CO. (CHIEF) 2015 and 1014 7th

CONTRACTORS

Blasler Herman 4761 W Kings
FITZSIMONS & CONNELL CO. (CHIEF) 2015 and 1014 7th
NEEL CO. (CHIEF) 2015 and 1014 7th

CONTRACTORS

Blasler Herman 4761 W Kings
FITZSIMONS & CONNELL CO. (CHIEF) 2015 and 1014 7th
NEEL CO. (CHIEF) 2015 and 1014 7th

DEALCOMANIA

1822

DECALOMANIA CO. (THE)
Largest Manufacturers in the World

THE MEYERCORD COMPANY
1116 N. 111th Street, Chicago, Ill.

DEALCOMANIA Transfers.
PALM, FECHTLER

Decorations and Furnishings.
MITCHELL & HALBACH CO.

Decorators.
WHEATON G. S.

Decorators.
ALBANI COMPANY (THE)

Architectural Drafting Co.
C. W. Johnson

BUCKLEY P. G. & BRO. CO.

BUTCHER, F. & SONS.

CARBONPIRE SCOTT & CO.

DANIELS' SCIENTIFIC STUDIOS

Decorators, Ornamental.
KEYSTONE DRILLER CO.

Decorators, Ornamental.
LLOYD W. H. S. CO.

Decorators, Ornamental.
ERICKSON C. A. & SONS

Decorators, Ornamental.
HAIN CASPER CO.

Decorators, Ornamental.
SHARP & SMITH

Decorators, Ornamental.
TRUX, GREENE & CO.

Decorators, Ornamental.
WOLFERTZ DEFORMITY

Decorators, Ornamental.
ANDERSON A. J. & CO.

Decorators, Ornamental.
MILLET LOUIS J.

Decorators, Ornamental.
MILIGAN GEO. D. CO.

Decorators, Ornamental.
MITCHELL & HALBACH CO.

DELI-CACIES

MacPhedon Josephine Mrs 2108 N. Clark

Machuga Frank 841 N. Howard

MacPherson Josephine Mrs 2108 N. Clark

MacPherson Josephine Mrs 2108 N. Clark

MacPherson Josephine Mrs 2108 N. Clark

MacPherson Josephine Mrs 2108 N. Clark

MacPherson Josephine Mrs 2108 N. Clark

MacPherson Josephine Mrs 2108 N. Clark

MacPherson Josephine Mrs 2108 N. Clark

MacPherson Josephine Mrs 2108 N. Clark

MacPherson Josephine Mrs 2108 N. Clark

MacPherson Josephine Mrs 2108 N. Clark

MacPherson Josephine Mrs 2108 N. Clark

MacPherson Josephine Mrs 2108 N. Clark

MacPherson Josephine Mrs 2108 N. Clark

MacPherson Josephine Mrs 2108 N. Clark

MacPherson Josephine Mrs 2108 N. Clark

MacPherson Josephine Mrs 2108 N. Clark

MacPherson Josephine Mrs 2108 N. Clark

MacPherson Josephine Mrs 2108 N. Clark

MacPherson Josephine Mrs 2108 N. Clark

MacPherson Josephine Mrs 2108 N. Clark

DELI-CACIES

MacPhedon Josephine Mrs 2108 N. Clark

MacPhedon Josephine Mrs 2108 N. Clark

MacPhedon Josephine Mrs 2108 N. Clark

MacPhedon Josephine Mrs 2108 N. Clark

MacPhedon Josephine Mrs 2108 N. Clark

MacPhedon Josephine Mrs 2108 N. Clark

MacPhedon Josephine Mrs 2108 N. Clark

MacPhedon Josephine Mrs 2108 N. Clark

MacPhedon Josephine Mrs 2108 N. Clark

MacPhedon Josephine Mrs 2108 N. Clark

MacPhedon Josephine Mrs 2108 N. Clark

MacPhedon Josephine Mrs 2108 N. Clark

MacPhedon Josephine Mrs 2108 N. Clark

MacPhedon Josephine Mrs 2108 N. Clark

MacPhedon Josephine Mrs 2108 N. Clark

MacPhedon Josephine Mrs 2108 N. Clark

MacPhedon Josephine Mrs 2108 N. Clark

MacPhedon Josephine Mrs 2108 N. Clark

MacPhedon Josephine Mrs 2108 N. Clark

MacPhedon Josephine Mrs 2108 N. Clark

MacPhedon Josephine Mrs 2108 N. Clark

MacPhedon Josephine Mrs 2108 N. Clark

DELI-CACIES

MacPhedon Josephine Mrs 2108 N. Clark

MacPhedon Josephine Mrs 2108 N. Clark

MacPhedon Josephine Mrs 2108 N. Clark

MacPhedon Josephine Mrs 2108 N. Clark

MacPhedon Josephine Mrs 2108 N. Clark

MacPhedon Josephine Mrs 2108 N. Clark

MacPhedon Josephine Mrs 2108 N. Clark

MacPhedon Josephine Mrs 2108 N. Clark

MacPhedon Josephine Mrs 2108 N. Clark

MacPhedon Josephine Mrs 2108 N. Clark

MacPhedon Josephine Mrs 2108 N. Clark

MacPhedon Josephine Mrs 2108 N. Clark

MacPhedon Josephine Mrs 2108 N. Clark

MacPhedon Josephine Mrs 2108 N. Clark

MacPhedon Josephine Mrs 2108 N. Clark

MacPhedon Josephine Mrs 2108 N. Clark

MacPhedon Josephine Mrs 2108 N. Clark

MacPhedon Josephine Mrs 2108 N. Clark

MacPhedon Josephine Mrs 2108 N. Clark

MacPhedon Josephine Mrs 2108 N. Clark

MacPhedon Josephine Mrs 2108 N. Clark

MacPhedon Josephine Mrs 2108 N. Clark

DENTISTS

Abrahamson Solomon 1223 S. Halsted

Abrahamson Solomon 1223 S. Halsted

Abrahamson Solomon 1223 S. Halsted

Abrahamson Solomon 1223 S. Halsted

Abrahamson Solomon 1223 S. Halsted

Abrahamson Solomon 1223 S. Halsted

Abrahamson Solomon 1223 S. Halsted

Abrahamson Solomon 1223 S. Halsted

Abrahamson Solomon 1223 S. Halsted

Abrahamson Solomon 1223 S. Halsted

Abrahamson Solomon 1223 S. Halsted

Abrahamson Solomon 1223 S. Halsted

Abrahamson Solomon 1223 S. Halsted

Abrahamson Solomon 1223 S. Halsted

Abrahamson Solomon 1223 S. Halsted

Abrahamson Solomon 1223 S. Halsted

Abrahamson Solomon 1223 S. Halsted

Abrahamson Solomon 1223 S. Halsted

Abrahamson Solomon 1223 S. Halsted

Abrahamson Solomon 1223 S. Halsted

Abrahamson Solomon 1223 S. Halsted

Abrahamson Solomon 1223 S. Halsted

PINKERTON'S NATIONAL DETECTIVE AGENCY

(Founded by Allan Pinkerton, 1850)

201 Fifth Avenue, Chicago

J. H. SCHUMACHER, General Supt. C. L. SHAFFER, Superintendent

Telephone Main 2828
Supt's Residence Night Telephone, Irving Park 415

PRINCIPALS

WM. A. PINKERTON, Chicago **ALLAN PINKERTON, New York**
GEO. D. BANGS, General Manager, New York

OFFICES

- | | | | | |
|---------------------|-------------------|--------------------|-----------------------|-----------------|
| NEW YORK | PITTSBURG | CHICAGO | NEW ORLEANS | SEATTLE |
| BOSTON | CLEVELAND | DETROIT | DENVER | PORTLAND |
| MONTREAL | CINCINNATI | ST. PAUL | SALT LAKE CITY | SPOKANE |
| PHILADELPHIA | TORONTO | ST. LOUIS | SAN FRANCISCO | |
| BALTIMORE | BUFFALO | KANSAS CITY | LOS ANGELES | |

Correspondents throughout the United States, Mexico, Canada and Europe. Business transacted in all parts of the world. No divorce cases undertaken, nor any work that will interfere with the Marriage Relations.

Pinkerton's Protective Patrol Connected with Pinkerton's National Detective Agency

(FOUNDED BY ALLAN PINKERTON 1850)

Station House 201 Fifth Avenue P. FOLEY, Inspector Telephone Main 2828

Lieutenants: J. H. CLEARY, B. D. WAY, Asst. Supt. JOS. CUTHBERT, Captain
M. F. DANNEHY, (EDGAR NEAL)
Uniformed Patrolmen Furnished Day or Night

This is the original PINKERTON'S NATIONAL DETECTIVE AGENCY and PINKERTON'S PROTECTIVE PATROL, and has no connection whatever with any other so-called Pinkerton Detective Agency.

J. R. HUNTER, W. A. VALLINS
RES. PHONE EDGEWATER 1778 PRINCIPALS RES. PHONE DOUGLAS 797



GENERAL DETECTIVE BUSINESS TRANSACTED FOR CORPORATIONS AND INDIVIDUALS CORRESPONDENTS IN ALL PARTS OF THE WORLD

OFFICE PHONE CENTRAL 5643
AUTOMATIC 9819

SUITE 515-516 - 100 WASHINGTON ST.

CHICAGO

Dermatologists—continued.
Richmond Jeanette L 140, 101 State
SEMERAK JOSEF M. D.
1610 First Island av
Singer Louise A Mrs 35, Auditorium
Sires Nelson, Mrs 4107, Auditorium
Tomkins J Elizabeth Mrs 60, 66 Randolph
Van Zeeve Anna Mrs 1005, Michigan
Vartovos Con J Mrs 1214, Masonic Temple
Vetter Mary Ann 629, 202 State
Woodbury John H 300, 169 State

***Derrick Manufacturers.**
BRUNNER & LAY,
870 W. Van
SASGEN BROS.
2025-2027, Madison av
***Derricks and Fittings.**
GEO. B. CARPENTER & CO.
200-208 North Water st.
***Designer.**
(Modern Dry Goods Store Fixtures).
TAUSSIG & FLEISCH,
1045, 1117 Adams, tel. Randolph-1444

Designers.
Anton Carl P 1007, 112 Clark
Arny Audlin P 201 St. Johns st
Buckley Fred 506, 202 Harrison
Hungerford Ernest H 705, 202 Michigan av

Commercial Illustrators Ch 41, 80 Madison
Gottlieb Walter R 774, 202 Leaville
Ozick A Mueller Mrs 614, 17 Vanburton
Pavoline J 210, 1011 South
Dunbar Harold L 749, Algonquin bldg
Faxon Mrs H 404, 276 Leaville
Hagstrom John A 720, 24 Clark
Hart Otto B 808, 276 Leaville
Hastings Wm B 615, 17 Vanburton
Hawley Mrs J 608, 288 Madison
Hendricks Louis 618, 21 Quincy
Lynch Clara A 1104, Auditorium bldg
Herrick Desjina Co 7100, 717, 240 Michigan av
Johnson Herman E 415, 302 Leaville
King Mary Mae 609, 17 Vanburton
Lynch J J & Co 1311, Michigan av
Kuhn Elizabeth H 1025, 202 Michigan av
Lawrence-Shilling Co 324, Leaville
Lawson Leonidas 4108, 410, 202 Michigan av
Lester Mrs J 908, 276 Leaville
Newman-Moroso Co 2700, 701, 212 Wabash av
O'Brien Mrs J 1028, 202 Michigan av
Pfeiffer Meyer & Co 414, 44 Franklin
Rosenberg Mrs S 718, Barry av
Schmidt Mrs S 1, Auditorium bldg
Rowley Theobald A 6210, Lake av
Schmidt J P & Co 124, 202 Leaville
Schneider Corral H 11 2919, Broadway
Singer Clara 81, Auditorium bldg
Sheldon Edith W Mrs 919, 31 Washington
Smith Marshall D 1011, 17 Jackson av
*Tinsley & Fleisch 1045, 1117 Adams
Tinsley & Fleisch 1045, 1117 Adams
Vandrom & Peyton 1104, Auditorium bldg
Waltz & Gilbert 1102, Michigan av
Waltz & Gilbert 1102, Michigan av
Waltz & Gilbert 1102, Michigan av

***Designers.**
(Decorative).
BOHR R. THEZIA
1111 N. 40 Vanburton, tel. Harrison-2128

***Designers and Illustrators.**
JUERGENS BROS. CO.
107 Adams
MANZ ENGRAVING CO
216 Wabash
75 EAST MONROE STREET
TELEPHONE CENTRAL 2822

RUBOVITS TOBY,
310-327, 5th av, tel. Harrison-3290
Desks.

ANDREWS A. H. CO.
(THE) 174 and 176 Wabash av
Cleveland Co 2007, Wabash
Derry Doug Co 911, Wabash av

DESKS DIRECT FROM OUR OWN FACTORY TO YOU
ALSO CHAIRS, TABLES, FILING CABINETS
FRANKLIN DESK FACTORY
46 E. JACKSON BLVD.
HAR. 8275

GLOBE - WERNICKE
CO. (THE) 224, 222 and 220, Wabash av
Larson Peter 2145, Town

MARSHALL FIELD & CO.
THEZIA
State, Washington, Randolph and Water
Ohio O G S Co, 2557, Main

OTIS DESK COMPANY,
1253-1257 N. Pauline
Peterson A & Co 425, Armour av

Revell & Co.
FINE OFFICE
Desks
Wabash Ave. and Adams St.

SABATH R. DESK CO.
R Sabath mng, 618 Dearborn
Thomas Case S 401, 46 Dearborn
U S Book & Office Fitting Co 600, 46 Dearborn

Detective Agencies.
ALEXANDER DETECTIVE AGENCY, 206, 171 Washington, tel. Main-1896
Alexander Leopold 206, 171 Washington
American Detective Service Co 603, 302 Dearborn
Anderson Geo A 808, W. Madison
Brandt Jacob P 407, 66 Washington
Burns & Stewart 610, 204 Dearborn

BURR-ROBESON CO. (THE)
628-629 Leaville 1st, Broadway 100
Central Detective Agency 207, 66 Dearborn
Clark John P 410, 24 Clark
Colleran Detective Agency 217, 140 Dearborn
Confidential Secret Service Co 127, The Hubber

MOONEY & BOLAND

CHICAGO STOCK EXCHANGE BUILDING
LA SALLE & WASHINGTON STS.
W. J. Sutherland, GENERAL MANAGER
WESTERN DIVISION.

SUCCESS REQUIRES
KEEP POSTED IT PAYS.
CONSTANT VIGILANCE.

130 Broadway, New York.
Robert Ferns, GENERAL MANAGER
EASTERN DIVISION.

DETECTIVE AGENCY.

WILLIAM J. SUTHERLAND, GENERAL MANAGER WESTERN DIVISION
Residence, 3659 Grand Boulevard, CHICAGO Telephone, DOUGLAS-430

WILLIAM D. SOULÉ, SUPERINTENDENT
Residence, 3638 Michigan Avenue Telephone, DOUGLAS-5367
REGISTERED CABLE ADDRESS, NEYLAND

Thirty-eight Years of Successful Operation Speaks for Itself

Legitimate Detective Work Undertaken and Satisfactorily Performed in all Parts of the World

W. J. SUTHERLAND, JOHN BOLAND, ROBERT J. FERNS
GENERAL MANAGER, GENERAL MANAGER, GENERAL MANAGER
WESTERN DIVISION, PRESIDENT, EASTERN DIVISION

REPRESENTATIVES LOCATED IN ALL PRINCIPAL AMERICAN AND EUROPEAN CITIES
TELEPHONES: MAIN-1990, 1991. AUTOMATIC-3039

MOONEY & BOLAND

RAILWAY SECRET SERVICE

THIS AGENCY DOES NOT OPERATE FOR REWARDS OR ENGAGE IN DIVORCE CASES (OVER)

WM. J. BURNS

WM. P. SHERIDAN

R. J. BURNS

BURNS & SHERIDAN NATIONAL DETECTIVE AGENCY

INCORPORATED

Representing
American Bankers' Association

808-811 First National Bank Building, Chicago, Ill.
Telephone Randolph 3503

OFFICES:

New York	St. Louis	St. Paul	Portland
Philadelphia	Kansas City	Denver	San Francisco
Pittsburg	New Orleans	Seattle	Los Angeles

GENERAL DETECTIVE WORK OF A HIGH CLASS GUARANTEED

McGuire & White Detective Agency

THIS Agency is prepared to undertake all proper Detective business entrusted to it by Railroad or other Corporations, Banks, Mercantile Houses, Attorneys or private individuals. It does not operate for Rewards or engage in Divorce Cases. We make a specialty of protecting Wholesale and Retail Stores from the depredations of shoplifters, pickpockets, pennyweighters, etc. We will pay liberally for information tending to identify any persons defrauding firms that we protect. A list of the firms that we protect may be secured upon application made by Phone or otherwise.

Offices: 513, 515, 516, 518, 520 First National Bank Bldg.

EXECUTIVE OFFICERS:
THOS. MCGUIRE
J. J. HOPPER
W. J. TURNER

Cor. Dearborn and Monroe Streets
Chicago

Telephones } Randolph-1580
 } Randolph-1581
 } Automatic-2596

American Detective Service Co.

NOT INC. FOUNDED 1889. OPEN DAY AND NIGHT

EXPERT SECRET SERVICE UNIFORMED MEN FURNISHED

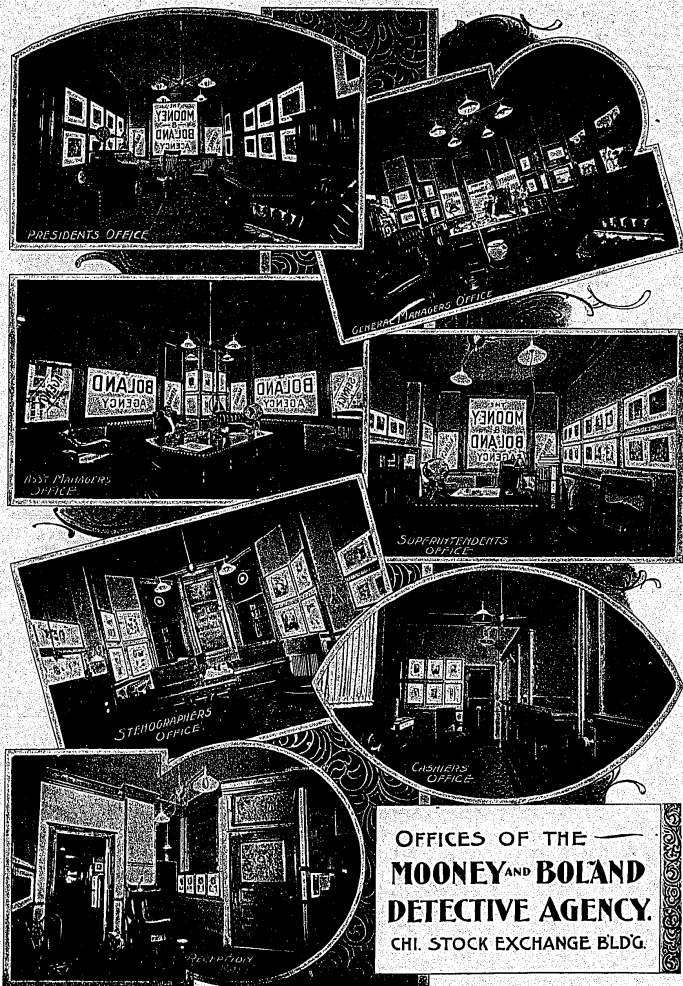
GENERAL OFFICES:
303 Dearborn Street, Plymouth Bldg.
CHICAGO

OFFICES:
NEW YORK: 3-5 Beekman St. PITTSBURG DETROIT ST. LOUIS ST. PAUL OMAHA
SAN FRANCISCO

CABLE ADDRESS "WECCARD" CHICAGO. Address all communications to John W. Weccard, Chicago.
STANLEY H. CONNORS, Asst. Gen. Mgr. Telephone Harrison-343 Long Distance Telephone connections

JOHN W. WECCARD, President and General Manager

We Undertake Proper Detective Business for Commercial Houses, Railway Companies, Attorneys, and All Other Corporations. We Have Correspondents All Over the World.



THIS AGENCY DOES NOT OPERATE FOR REWARDS OR ENGAGE IN DIVORCE CASES

O'BRIEN'S SECRET SERVICE

WM. J. O'BRIEN, General Manager

Suite 620-630 125 La Salle Street

CIVIL AND CRIMINAL INVESTIGATIONS UNDERTAKEN FOR BANKS, RAILROADS, CORPORATIONS, ATTORNEYS AND INDIVIDUALS

Phone Franklin 896

CORRESPONDENTS IN PRINCIPAL CITIES OF THE U. S.

Night Phone, Lake View 5650

Advertisement for Miss Cora M. Strayer's Private Detective Agency, 2838 Indiana Avenue, Chicago. Includes a portrait of Miss Strayer and contact information for Chicago and San Antonio offices.

- Detective Agencies—continued. List of various detective agencies including Holben George S., Hunter's Secret, International Secret, Interstate Detective, and McGuire & White.

Advertisement for Colleran Detective Agency, 516, 517 and 518 Hartford Building. Includes contact information and a list of services.

Advertisement for Mooney & Boland and O'Brien Secret Service. Includes contact information for both agencies.

Advertisement for Young Secret Service Company, Confidential Investigations, Suite 301, 234 La Salle Street, Chicago. Includes contact information and a list of services.

MATT W. PINKERTON Principal and Gen'l Manager

R. R. PINKERTON Manager

A. E. PINKERTON Treasurer

R. N. PINKERTON Assistant General Manager

PINKERTON & CO. United States Detective Agency

OFFICES, TEMPLE COURT BUILDING 207-210, 225 DEARBORN ST. Telephone: Harrison-3399 and Automatic-1036

CHICAGO GABLE ADDRESS "WORTH" NEW ORLEANS GABLE ADDRESS "LIVINGSTON" SOUTHERN DIVISION

PAUL ISRAEL AND GEO. J. LOEFFEL, MANAGERS OFFICES: 433-434-435 AUDUBON BLDG. NEW ORLEANS, LA.

- Detective Agencies—Continued. List of agencies including Marshall Geo. E., Moore & Evans, Strayer's Coram., Sutherland Wm. J., White & McGuire, Jackson & Spindelmeier, Stein, Hirsch & Co., Loftis Bros. & Co., Rasserweil Aug., Standard Diamond Mill Co., Sullivan Machinery Company, Hyman & Co., Juergens & Andersen Co., Loftis Bros. & Co., Alen Benj. & Co., Barrett Bindery Co., Schmidt Geo. T., Mettal Specialties Mfg. Co., Joseph Herbert L. & Co., and Atlas Stamping Co.

CHICAGO DIE & MACHINE WORKS, James Stone, 988 Fulton

CHICAGO RAILROAD ALUMINUM BRASS & IRON WORKS, 509 W. Jackson

HOEFT & COMPANY, 1414-1416 W. Michigan

KOHLER DIE & SPECIALTY CO., 817-825 Washington Bldg.

MOORE & COMPANY, Die Makers and Machinists

QUADRIGA MFG. CO., (THE) 119 and 121 N. Canal

SCHWAB & BIOS, 107 S. Dearborn

BROCKTON DIE CO., 200-202 W. Huron

CHICAGO LAST & DIE CO., 2316-2322 W. 24th place

VAN PELT GEORGE H., 440 to 452 W. Huron

OWEN E. H. & CO., 101 to 109 N. Franklin

RISSER MANUFACTURING CO., (THE) 1033-1037 W. Lake

FLEMMING E. & CO., 415 Dearborn

LUDWIG & SCHLIEPFAKE, 104-110 N. Franklin

SCHMIDT GEO. T., 442, 152 Lake

HOEFT & COMPANY, 1414-1416 W. Michigan

WESTERN METAL MFG. CO., 111 and 113 N. Jefferson

SALISBURY P. A. - SCHULZ COMPANY, 104-108 Randolph

QUADRIGA MFG. CO., (THE) 119 and 121 N. Canal

BANKERS' DIRECTORY AND LIST OF BANK ATTY.

CHICAGO DIRECTORY CO., PUBLISHERS

LAKESIDE PRESS BLDG., Plymouth Ct., Cor. Park St.

R. L. POLK & CO., Addressing, Folders, Lists, Letters

QUADRIGA MFG. CO., (THE) 119 and 121 N. Canal

SCHWAB & BIOS, 107 S. Dearborn

BROCKTON DIE CO., 200-202 W. Huron

CHICAGO LAST & DIE CO., 2316-2322 W. 24th place

VAN PELT GEORGE H., 440 to 452 W. Huron

OWEN E. H. & CO., 101 to 109 N. Franklin

RISSER MANUFACTURING CO., (THE) 1033-1037 W. Lake

FLEMMING E. & CO., 415 Dearborn

LUDWIG & SCHLIEPFAKE, 104-110 N. Franklin

SCHMIDT GEO. T., 442, 152 Lake

HOEFT & COMPANY, 1414-1416 W. Michigan

WESTERN METAL MFG. CO., 111 and 113 N. Jefferson

SALISBURY P. A. - SCHULZ COMPANY, 104-108 Randolph

QUADRIGA MFG. CO., (THE) 119 and 121 N. Canal

BANKERS' DIRECTORY AND LIST OF BANK ATTY.

CHICAGO DIRECTORY CO., PUBLISHERS

LAKESIDE PRESS BLDG., Plymouth Ct., Cor. Park St.

DRESSMAKERS

Dressmakers—continued.

Archer, Charles W. 4724 W. 47th St. ...
Archer, Charles W. 4724 W. 47th St. ...
Archer, Charles W. 4724 W. 47th St. ...
Archer, Charles W. 4724 W. 47th St. ...
Archer, Charles W. 4724 W. 47th St. ...

1582

Alexander, John 1212 S. 2nd St. ...
Alexander, John 1212 S. 2nd St. ...
Alexander, John 1212 S. 2nd St. ...
Alexander, John 1212 S. 2nd St. ...
Alexander, John 1212 S. 2nd St. ...

DRESSMAKERS

Allen, Mrs. W. 1234 N. 1st St. ...
Allen, Mrs. W. 1234 N. 1st St. ...
Allen, Mrs. W. 1234 N. 1st St. ...
Allen, Mrs. W. 1234 N. 1st St. ...
Allen, Mrs. W. 1234 N. 1st St. ...

DRESSMAKERS

Amelia, Mrs. 218 W. 1st St. ...
Amelia, Mrs. 218 W. 1st St. ...
Amelia, Mrs. 218 W. 1st St. ...
Amelia, Mrs. 218 W. 1st St. ...
Amelia, Mrs. 218 W. 1st St. ...

DRESSMAKERS

Amelia, Mrs. 218 W. 1st St. ...
Amelia, Mrs. 218 W. 1st St. ...
Amelia, Mrs. 218 W. 1st St. ...
Amelia, Mrs. 218 W. 1st St. ...
Amelia, Mrs. 218 W. 1st St. ...

DRESSMAKERS

Annie, Mrs. 1234 N. 1st St. ...
Annie, Mrs. 1234 N. 1st St. ...
Annie, Mrs. 1234 N. 1st St. ...
Annie, Mrs. 1234 N. 1st St. ...
Annie, Mrs. 1234 N. 1st St. ...

DRESSMAKERS

Dressmakers—continued.

Novak Mary Mrs 700 Bond st
Noyes Margaret Mrs 408 Thomas
Nowell Lillian Mrs 1000 Bond st
Nowell Lillian Mrs 1000 Bond st
Nowell Lillian Mrs 1000 Bond st

DRESSMAKERS

Oliver Christine Miss 2146 Columbia st
Olson Mary Mrs 1015 Bond st
Olson Mary Mrs 1015 Bond st
Olson Mary Mrs 1015 Bond st

DRESSMAKERS

Opfer Frances Miss 4909 N Ashland av
Opfer Frances Miss 4909 N Ashland av
Opfer Frances Miss 4909 N Ashland av

DRESSMAKERS

Opfer Frances Miss 4909 N Ashland av
Opfer Frances Miss 4909 N Ashland av
Opfer Frances Miss 4909 N Ashland av

DRUGGISTS

Opfer Frances Miss 4909 N Ashland av
Opfer Frances Miss 4909 N Ashland av
Opfer Frances Miss 4909 N Ashland av

RICHARD POLLAK

LADIES' TAILOR AND DRESS MAKER
Phone Harrison 6256 271-272 MICHIGAN AV.

Peter Van Schaack & Sons

The Old Salsander Drug House
128 and 140 LAKE STREET, CHICAGO.

DRUGGISTS

Opfer Frances Miss 4909 N Ashland av
Opfer Frances Miss 4909 N Ashland av
Opfer Frances Miss 4909 N Ashland av

DRUGGISTS

Druggists (Retail)—continued.
Graham, Wm 2011 W. Chicago
Gross, H. 2219 W. Chicago
Gross, H. 2219 W. Chicago
Gross, H. 2219 W. Chicago

HEALTHY L.

100 Randolph
Hedding, Constance 401 Morse av
Holladay, John 401 Morse av
Holladay, John 401 Morse av
Holladay, John 401 Morse av

MARKS THE DRUGGIST

100 Randolph
Hedding, Constance 401 Morse av
Holladay, John 401 Morse av
Holladay, John 401 Morse av

MATHISON SOREN

2120 Belmont
Mathison, Soren 2120 Belmont
Mathison, Soren 2120 Belmont
Mathison, Soren 2120 Belmont

RED LOUIS

101-103 W 21st
Red Louis 101-103 W 21st
Red Louis 101-103 W 21st
Red Louis 101-103 W 21st

ALBANY

100 Albany
Albany 100 Albany
Albany 100 Albany
Albany 100 Albany

DRUGGISTS

Albion Alfred P 1800 N 28th
Albion Alfred P 1800 N 28th
Albion Alfred P 1800 N 28th
Albion Alfred P 1800 N 28th

DRUGGISTS

Albion Alfred P 1800 N 28th
Albion Alfred P 1800 N 28th
Albion Alfred P 1800 N 28th
Albion Alfred P 1800 N 28th

PUBLIC DRUG CO. (THE)

Public Drug Co. (The)
Public Drug Co. (The)
Public Drug Co. (The)
Public Drug Co. (The)

DRUGGISTS

Albion Alfred P 1800 N 28th
Albion Alfred P 1800 N 28th
Albion Alfred P 1800 N 28th
Albion Alfred P 1800 N 28th

DRUGGISTS

Albion Alfred P 1800 N 28th
Albion Alfred P 1800 N 28th
Albion Alfred P 1800 N 28th
Albion Alfred P 1800 N 28th

DRUGGISTS

Albion Alfred P 1800 N 28th
Albion Alfred P 1800 N 28th
Albion Alfred P 1800 N 28th
Albion Alfred P 1800 N 28th

DRUGGISTS

Albion Alfred P 1800 N 28th
Albion Alfred P 1800 N 28th
Albion Alfred P 1800 N 28th
Albion Alfred P 1800 N 28th

DRUGGISTS

Albion Alfred P 1800 N 28th
Albion Alfred P 1800 N 28th
Albion Alfred P 1800 N 28th
Albion Alfred P 1800 N 28th

DRUGGISTS

Albion Alfred P 1800 N 28th
Albion Alfred P 1800 N 28th
Albion Alfred P 1800 N 28th
Albion Alfred P 1800 N 28th

DRUGGISTS

Albion Alfred P 1800 N 28th
Albion Alfred P 1800 N 28th
Albion Alfred P 1800 N 28th
Albion Alfred P 1800 N 28th

DRUGGISTS

Albion Alfred P 1800 N 28th
Albion Alfred P 1800 N 28th
Albion Alfred P 1800 N 28th
Albion Alfred P 1800 N 28th

DRUGGISTS

Albion Alfred P 1800 N 28th
Albion Alfred P 1800 N 28th
Albion Alfred P 1800 N 28th
Albion Alfred P 1800 N 28th

DRUGGISTS

Albion Alfred P 1800 N 28th
Albion Alfred P 1800 N 28th
Albion Alfred P 1800 N 28th
Albion Alfred P 1800 N 28th

DRY

Albion Alfred P 1800 N 28th
Albion Alfred P 1800 N 28th
Albion Alfred P 1800 N 28th
Albion Alfred P 1800 N 28th

DRY

Albion Alfred P 1800 N 28th
Albion Alfred P 1800 N 28th
Albion Alfred P 1800 N 28th
Albion Alfred P 1800 N 28th

DRY

Albion Alfred P 1800 N 28th
Albion Alfred P 1800 N 28th
Albion Alfred P 1800 N 28th
Albion Alfred P 1800 N 28th

DRY

Albion Alfred P 1800 N 28th
Albion Alfred P 1800 N 28th
Albion Alfred P 1800 N 28th
Albion Alfred P 1800 N 28th

DRUGGISTS

Albion Alfred P 1800 N 28th
Albion Alfred P 1800 N 28th
Albion Alfred P 1800 N 28th
Albion Alfred P 1800 N 28th

DRUGGISTS

Albion Alfred P 1800 N 28th
Albion Alfred P 1800 N 28th
Albion Alfred P 1800 N 28th
Albion Alfred P 1800 N 28th

DRUGGISTS

Albion Alfred P 1800 N 28th
Albion Alfred P 1800 N 28th
Albion Alfred P 1800 N 28th
Albion Alfred P 1800 N 28th

DRUGGISTS

Albion Alfred P 1800 N 28th
Albion Alfred P 1800 N 28th
Albion Alfred P 1800 N 28th
Albion Alfred P 1800 N 28th

DRY

Albion Alfred P 1800 N 28th
Albion Alfred P 1800 N 28th
Albion Alfred P 1800 N 28th
Albion Alfred P 1800 N 28th

DRY

Albion Alfred P 1800 N 28th
Albion Alfred P 1800 N 28th
Albion Alfred P 1800 N 28th
Albion Alfred P 1800 N 28th

DRY

Albion Alfred P 1800 N 28th
Albion Alfred P 1800 N 28th
Albion Alfred P 1800 N 28th
Albion Alfred P 1800 N 28th

DRY

Albion Alfred P 1800 N 28th
Albion Alfred P 1800 N 28th
Albion Alfred P 1800 N 28th
Albion Alfred P 1800 N 28th

DRY GOODS

Dry Goods (Retail)-continued.
Olat Florida 4221 Westworth av.
Olat Florida 4221 Westworth av.
Olat Florida 4221 Westworth av.

HILMAN'S
Hilman's
Hilman's
Hilman's

MARSHALL FIELD
Marshall Field
Marshall Field
Marshall Field

John & Malin 1227 S. Halsted
John & Malin 1227 S. Halsted
John & Malin 1227 S. Halsted

DRY GOODS

Officer Morris 4607 S. Wood
Officer Morris 4607 S. Wood
Officer Morris 4607 S. Wood

Officer Morris 4607 S. Wood
Officer Morris 4607 S. Wood
Officer Morris 4607 S. Wood

Officer Morris 4607 S. Wood
Officer Morris 4607 S. Wood
Officer Morris 4607 S. Wood

Officer Morris 4607 S. Wood
Officer Morris 4607 S. Wood
Officer Morris 4607 S. Wood

SIEGEL COOPER & CO

State, Congress and Senator
State, Congress and Senator
State, Congress and Senator

DRY

*Dry Goods Jewelry Novelties.
(Dry Goods)
Manufacturers, Importers and Dealers
BEGS COMES New Jewelry

*Dry Linen Manufacturers.
(Lumber Dryers)
ANDREWS A. H. CO.
MORTON DRY KILN

*Dry Cloth.
Hess Warming & Ventilating Co.
MATHIS BROTHERS

*Dryers.
(CHINA DRYERS OF ALL KINDS)
CHICAGO DYER CO.

*Dry Cleaning.
BERANEK NOBERT.
CHAS. BLEODORN

*Dry Cleaning.
WENBOIRNE & CO.
Dumb Waiters.

*Dry Cleaning.
MURPHY & CO.
DICK A. B. COMPANY.

*Dry Cleaning.
NEOSTYLE CO. (THE).
LEO GRAPHIC COMPANY.

DRY

*Dry Goods Jewelry Novelties.
(Dry Goods)
Manufacturers, Importers and Dealers
BEGS COMES New Jewelry

*Dry Linen Manufacturers.
(Lumber Dryers)
ANDREWS A. H. CO.
MORTON DRY KILN

*Dry Cloth.
Hess Warming & Ventilating Co.
MATHIS BROTHERS

*Dryers.
(CHINA DRYERS OF ALL KINDS)
CHICAGO DYER CO.

*Dry Cleaning.
BERANEK NOBERT.
CHAS. BLEODORN

*Dry Cleaning.
WENBOIRNE & CO.
Dumb Waiters.

*Dry Cleaning.
MURPHY & CO.
DICK A. B. COMPANY.

*Dry Cleaning.
NEOSTYLE CO. (THE).
LEO GRAPHIC COMPANY.

DRYERS

ROSENWASSER J.
OSWALD SCHUETTAUFF & SON
BERLIN CLEANING & DYING WORKS

SCHWARTZ THOMAS A. & CO.
SCHWARZ AUGUST.
SEID ABRHAM

SEMINARY CLEANERS & SOUTH SIDE STEAM DYE WORKS

STATE STREET DYEING CLEANING WORKS

AMERICAN DYING & CLEANING WORKS

BAHRE HUGO H.
BERANEK NOBERT.

CHAS. BLEODORN CLEANING AND DYING

BOSTON FANCY STEAM DYE HOUSE

DYERS

Dyers and Scaourers - continued.
Hirsch Henrietta 888 W. 884
Johnston Max 1805 W. 125 State
Lorenz Max 1805 W. 125 State
Lorenz Max 1805 W. 125 State

ELECTRIC

Opson Jacob H 8342 W. North av
Pawlowich Wm 88 W 5144
Pawlowich Wm 88 W 5144
Pawlowich Wm 88 W 5144

ELECTRIC

Swenover Doris 1402 W Madison
Tammey Mary Mm 6206 W Madison
Tammey Mary Mm 6206 W Madison
Tammey Mary Mm 6206 W Madison

ELECTRIC

ELECTRIC LIGHTING SUPPLIES AT LOWEST MARKET PRICES

Generators and Distributors of ELECTRICITY FOR LIGHT, HEAT AND POWER Telephone Randolph 1280

Commonwealth Edison Company General Offices, Edison Building, 139 Adams St., Chicago

Advertisement for Commonwealth Edison Company featuring various electrical services and product listings. Includes sections for Electric Fixtures, Electric Stoves, Electric Motors, and Electric Light Fixtures. Lists names of various electrical firms and their addresses.

DYERS

Dyers and Scaourers - continued.
Hirsch Henrietta 888 W. 884
Johnston Max 1805 W. 125 State
Lorenz Max 1805 W. 125 State

ELECTRIC

Opson Jacob H 8342 W. North av
Pawlowich Wm 88 W 5144
Pawlowich Wm 88 W 5144

ELECTRIC

Swenover Doris 1402 W Madison
Tammey Mary Mm 6206 W Madison
Tammey Mary Mm 6206 W Madison